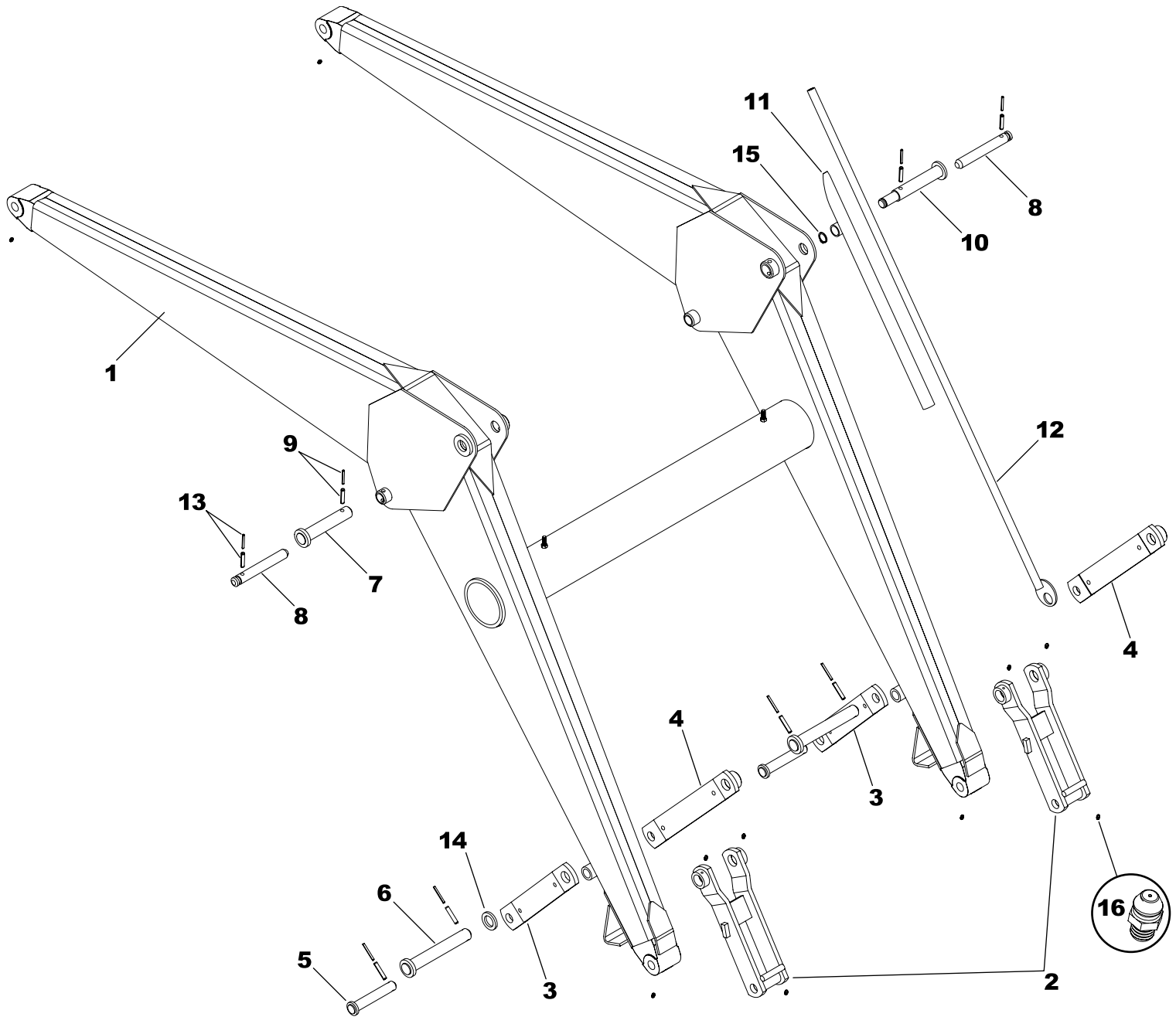


BASIC LOADER TOWER REPLACEMENT PARTS

Ref.	Part No.	Description	Qty.	Ref.	Part No.	Description	Qty.
1	NCT-12AAS-R	TOWER HALF - RIGHT	1	9	HTN1011	5/8" LOCK NUT	12
2	NCT-12AAS-L	TOWER HALF - LEFT	1	10	HHS1011028	5/8" x 1-3/4" BOLT	4
-	NAT-120COM-R	SLIDE LOCK COMPLETE*	-	11	LWM10	5/8" LOCK WASHER	4
-	NAT-120COM-L	SLIDE LOCK COMPLETE*	-	12	0H032A	FRONT WRAP**	1
3	NAT-120BAS-R	LATCH ASSEMBLY RIGHT	1	13	JT-20A	PIN	4
4	NAT-120BAS-L	LATCH ASSEMBLY LEFT	1	14	DRP0600032	DOUBLE ROLL PIN	4
5	NAT-106A-R	LATCH - RIGHT	1	15	RT-15FAS	LOADER SHOE ASSEMBLY	2
6	NAT-106A-L	LATCH - LEFT	1	16	HHS1011072	5/8" x 4-1/2" BOLT	4
7	CBF1011056	5/8" x 3-1/2" CARRIAGE BOLT	4	17	RLG-51	SPRING	2
8	NAT-140AS	EYE BOLTS	4	18	NAT-126	RIVET	2

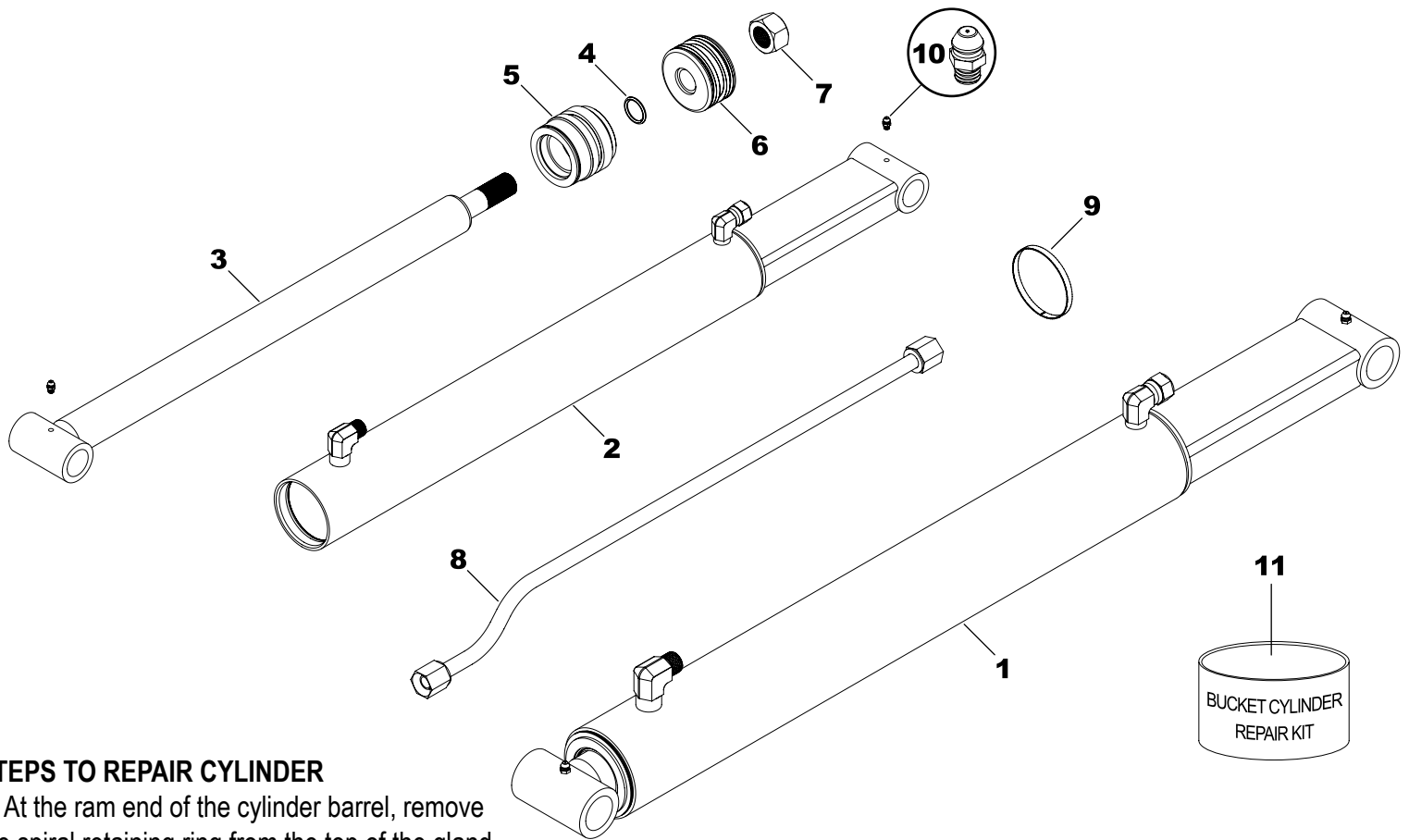
*NAT-120COM-R Includes: 3,5,7(2),8(2),9(4),17,18. *NAT-120COM-L Includes: 4,6,7(2),8(2),9(4),17,18.

**Varies by Tractor (Standard Wrap is 0H032)



BASIC LOADER ARM REPLACEMENT PARTS

Ref.	Part No.	Description	Qty.	Ref.	Part No.	Description	Qty.
1	NCF-4AAS	FRAME ASSEMBLY	1	9	DRP0600032	DOUBLE ROLL PIN	4
2	NAF-15BAS	LINKAGE CONNECTOR	2	10	NAF-57AAS	ROUND HEAD PIN GAUGE ROD	1
3	NAF-10C	LINKAGE BAR	2	11	LMF-31AS	GAUGE ROD HOLDER	1
4	NAF-10CAS	LINKAGE BAR WITH BUSHING	2	12	LMF-47	GAUGE ROD	1
5	LMF-28AS	ROUND HEAD PIN	2	13	DRP0600028	DOUBLE ROLL PIN	4
6	LMF-125AS	ROUND HEAD PIN	2	14	NAF-117	SPACER WASHER	1
7	NAF-56AAS	ROUND HEAD PIN	1	15	SR-C08	SNAP RING	1
8	LF-82A	PIN-LIFT	2	16	ZER1805	GREASE FITTING	12



STEPS TO REPAIR CYLINDER

- 1) At the ram end of the cylinder barrel, remove the spiral retaining ring from the top of the gland.
- NOTE:** The G-E gland does not use the spiral retaining ring.
- 2) Gently drive the gland into the barrel using a brass or non-marring punch until the round retaining ring is visible.
- 3) Remove the round retaining ring using a pair of long nose pliers.
- 4) Remove the ram assembly (ram, gland, and piston) from the barrel.
- 5) Notice the direction they are pointing so they can be properly assembled.
- 6) Remove the jam nut and/or hex nut from the end of the ram.
- 7) Remove the old seals and rings and replace them with the new seals and rings. (Seal kits are packaged for several different cylinders. You may have extra parts.)
- 8) Clean the cylinder with cleaner and a clean lint free cloth.
- 9) Lubricate the seals and rings to aid assembly.
- 10) Assemble the cylinder by reversing the order.

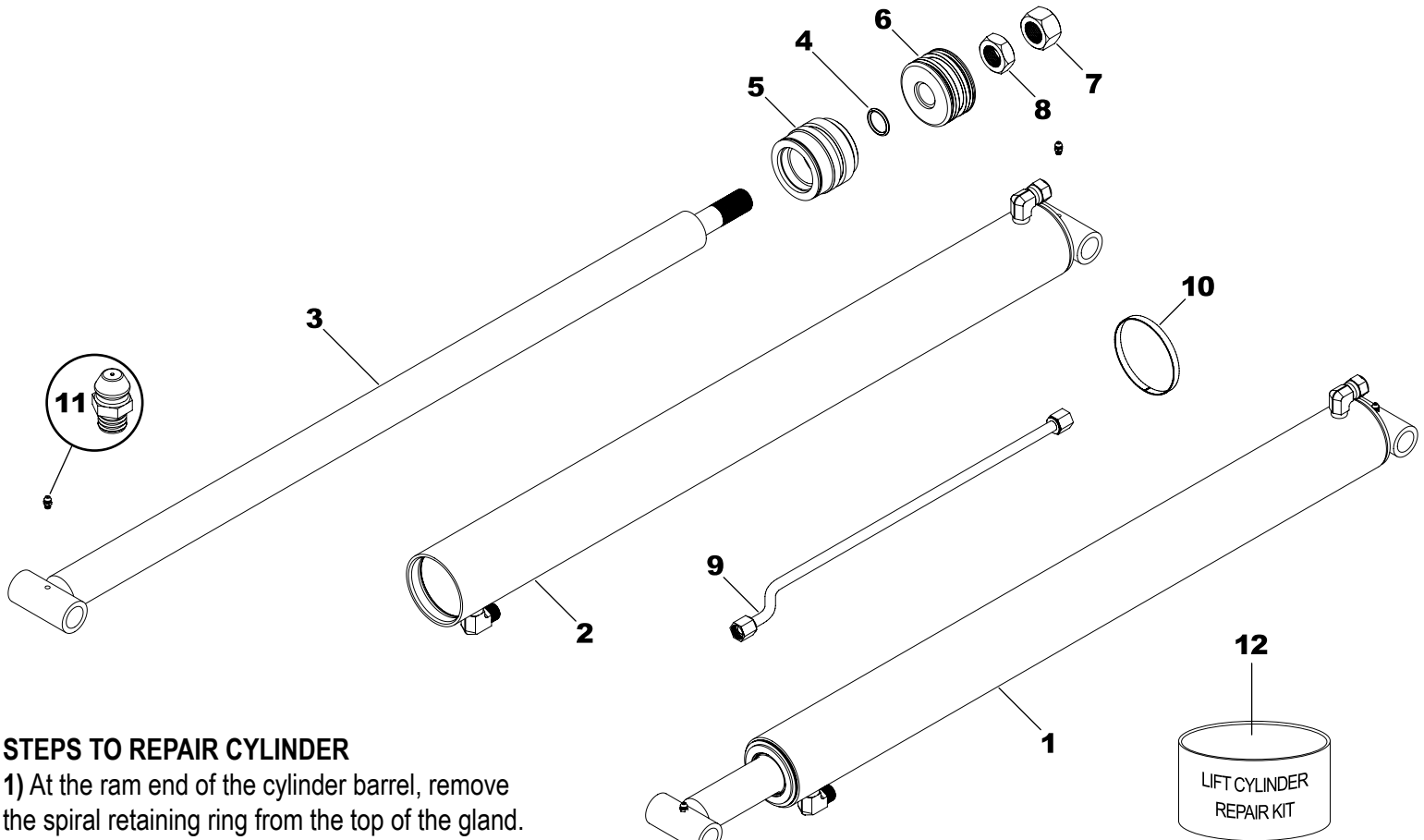
CYLINDER REPAIR TIPS

- When disassembling cylinders, keep the parts in correct orientation. Remove parts in sequence.
- Note the direction of the piston and gland. Lay out old seals and parts as they are removed.
- Assemble cylinder in the proper order; lubricate to aid assembly.

BUCKET CYLINDER REPLACEMENT PARTS

Ref.	Part No.	Description	Qty.
1	B-24A	CYLINDER COMPLETE	1
2	B-2401A	CYLINDER BARREL	1
3	B-2410A	CYLINDER RAM	1
4	OR-214	O-RING	1
5	G-L	GLAND	1
6	P-B	PISTON	1
7	HFN1614	1" NUT	1
8	OLT-143	OIL LINE	1
9	BAND-15	METAL BAND	1
10	ZER1805	GREASE FITTING	2
11	# 4CK	SEAL KIT*	1

NOTE: *Seal kit contains parts to repair one cylinder.



STEPS TO REPAIR CYLINDER

- 1) At the ram end of the cylinder barrel, remove the spiral retaining ring from the top of the gland.
- NOTE:** The G-E gland does not use the spiral retaining ring.
- 2) Gently drive the gland into the barrel using a brass or non-marring punch until the round retaining ring is visible.
- 3) Remove the round retaining ring using a pair of long nose pliers.
- 4) Remove the ram assembly (ram, gland, and piston) from the barrel.
- 5) Notice the direction they are pointing so they can be properly assembled.
- 6) Remove the jam nut and/or hex nut from the end of the ram.
- 7) Remove the old seals and rings and replace them with the new seals and rings. (Seal kits are packaged for several different cylinders. You may have extra parts.)
- 8) Clean the cylinder with cleaner and a clean lint free cloth.
- 9) Lubricate the seals and rings to aid assembly.
- 10) Assemble the cylinder by reversing the order.

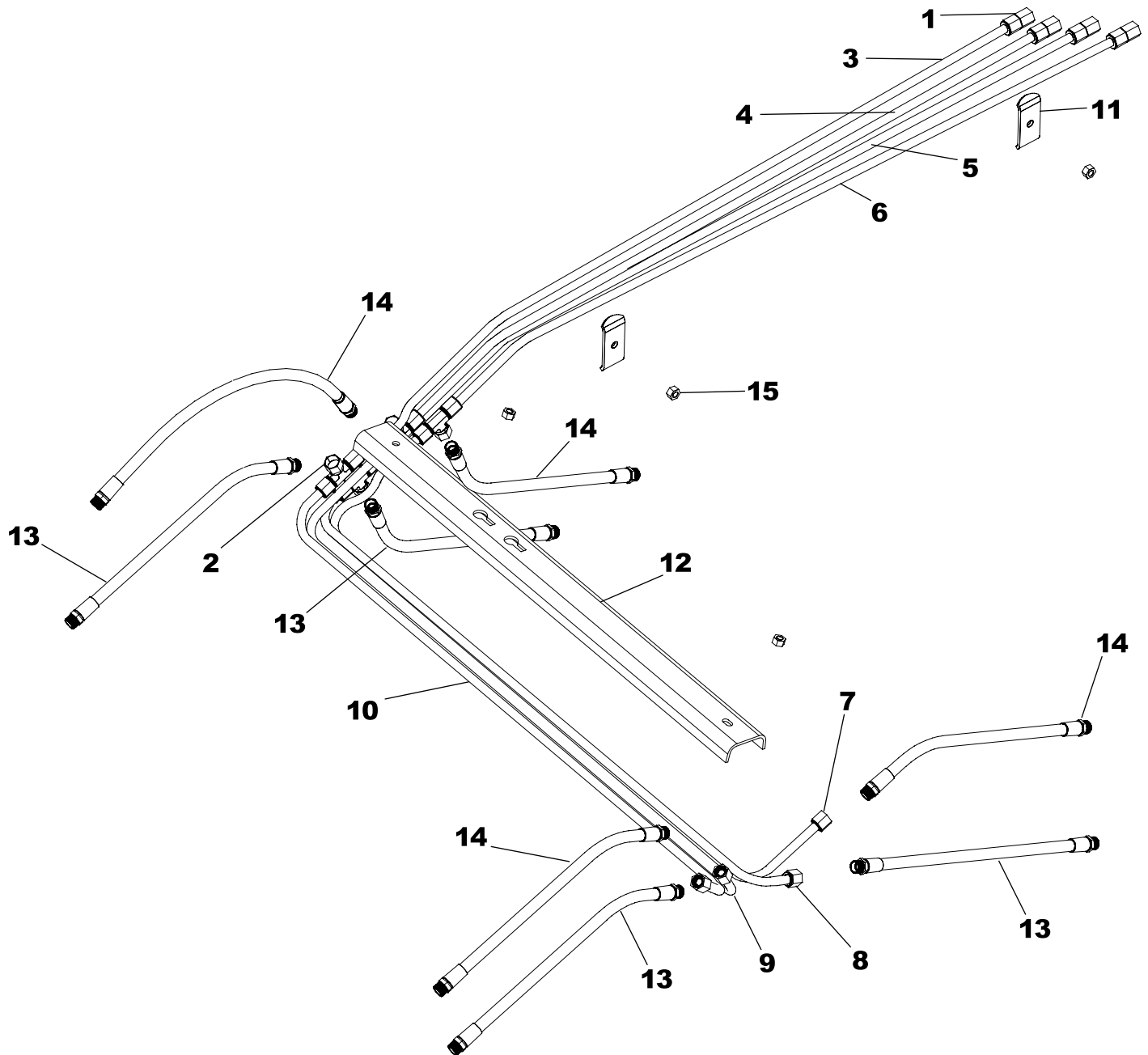
CYLINDER REPAIR TIPS

- When disassembling cylinders, keep the parts in correct orientation. Remove parts in sequence.
- Note the direction of the piston and gland. Lay out old seals and parts as they are removed.
- Assemble cylinder in the proper order; lubricate to aid assembly.

LIFT CYLINDER REPLACEMENT PARTS

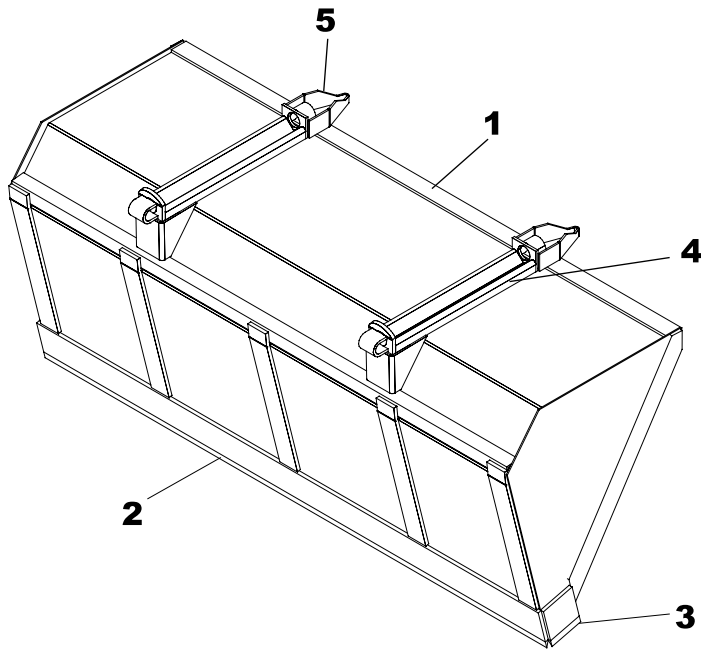
Ref.	Part No.	Description	Qty.
1	L-28A	CYLINDER (COMPLETE)	1
2	L-2801A	CYLINDER BARREL	1
3	L-2810A	CYLINDER RAM	1
4	OR-214	O-RING	1
5	G-L	GLAND	1
6	P-B	PISTON	1
7	HFN1614	1" HEX NUT	1
8	HJN1614	1" JAM NUT	1
9	OLT-1	OIL LINE	1
10	BAND-15	METAL BAND	1
11	ZER1805	GREASE FITTING	2
12	# 4CK	SEAL REPAIR KIT*	1

NOTE: *Seal kit contains parts to repair one cylinder.



HYDRAULIC LINES

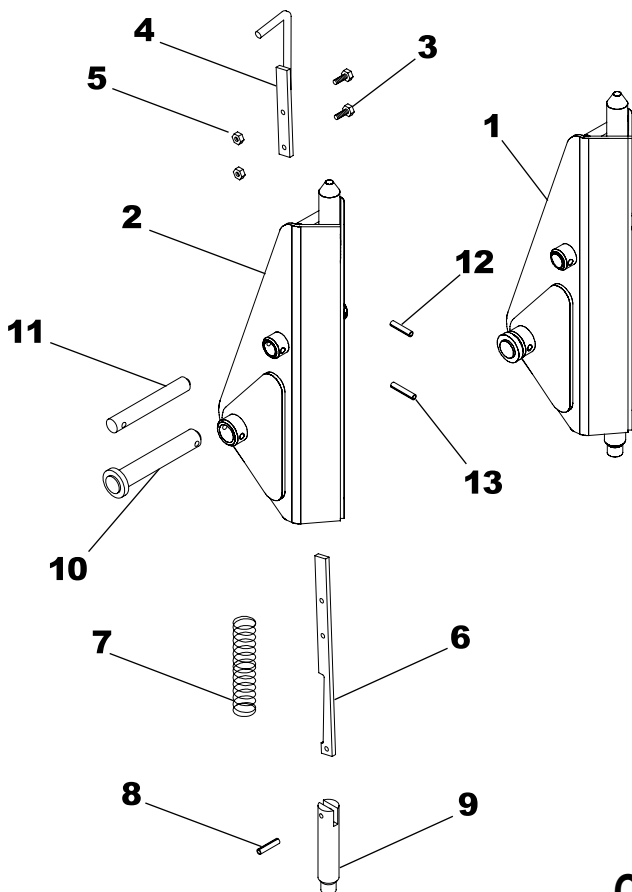
Ref.	Part No.	Description	Qty.	Ref.	Part No.	Description	Qty.
1	PF-FFC8	FEMALE CONNECTORS	4	9	OLT-38	OIL LINE	1
2	PF-FSBT8	SWIVEL NUT TEE	4	10	OLT-39	OIL LINE	1
3	OLT-32	OIL LINE	1	11	OH-3C	OIL LINE HOLDER	2
4	OLT-33	OIL LINE	1	12	OH-1A	OIL LINE COVER	1
5	OLT-34	OIL LINE	1	13	H06015FF	15" HOSE	4
6	OLT-35	OIL LINE	1	14	H06020FF	20" HOSE	4
7	OLT-36	OIL LINE	1	15	HTN0616	3/8" LOCK NUT	4
8	OLT-37	OIL LINE	1				



BUCKET

Ref.	Part No.	Description	Qty.
1	84Q425	84" BUCKET COMPLETE*	-
1	90Q425	90" BUCKET COMPLETE*	-
1	96Q429	96" BUCKET COMPLETE*	-
2	SB-14	84" CUTTING BLADE*	-
2	LB-14	90" CUTTING BLADE*	-
2	CB-14	96" CUTTING BLADE*	-
3	SB-15	SIDE BLADE	2
4	C-2	RECEIVER ADAPTER	2
5	JB-22	ATTACH GUIDE (OPTION)	2

NOTE: *Depends on width--measure width to get right part.



SNAP-ATTACH™ COUPLER (C-4)

Ref.	Part No.	Description	Qty.
1	QC-201CCOM	SNAP ATTACH (COMPLETE)	1
2	QC-1201AS	SNAP ATTACH (SHELL)	1
3	HHS0518016	5/16" X 1" BOLT	2
4	QC-6AAS	HANDLE	1
5	HTN0518	5/16" LOCK NUT	2
6	QC-8C	LATCH	1
7	QC-12	SPRING	1
8	RLP0500020	ROLL PIN	1
9	QC-3A	PLUNGER	1
10	QC-206AAS	PIN ROUND HEAD	1
11	LF-51A	PIN	1
12	DRP0600028	DOUBLE ROLL PIN	1
13	DRP0600032	DOUBLE ROLL PIN	1

COSMETICS

Ref.	Part No.	Description	Qty.	Ref.	Part No.	Description	Qty.
1	DEC-45	DECAL KIT	1	3	V-9524-P	PINT BLACK PAINT	1
2	V-5403-A	RED SPRAY PAINT	1	4	V-9524-Q	QUART BLACK PAINT	1
	V-9524-A	BLACK SPRAY PAINT	1	5	V-9524-G	GALLON BLACK PAINT	1

NOTE: Warning decals are available at no charge. If they become damaged or missing, order part numbers DEC-45.