

## BASIC LOADER TOWER REPLACEMENT PARTS

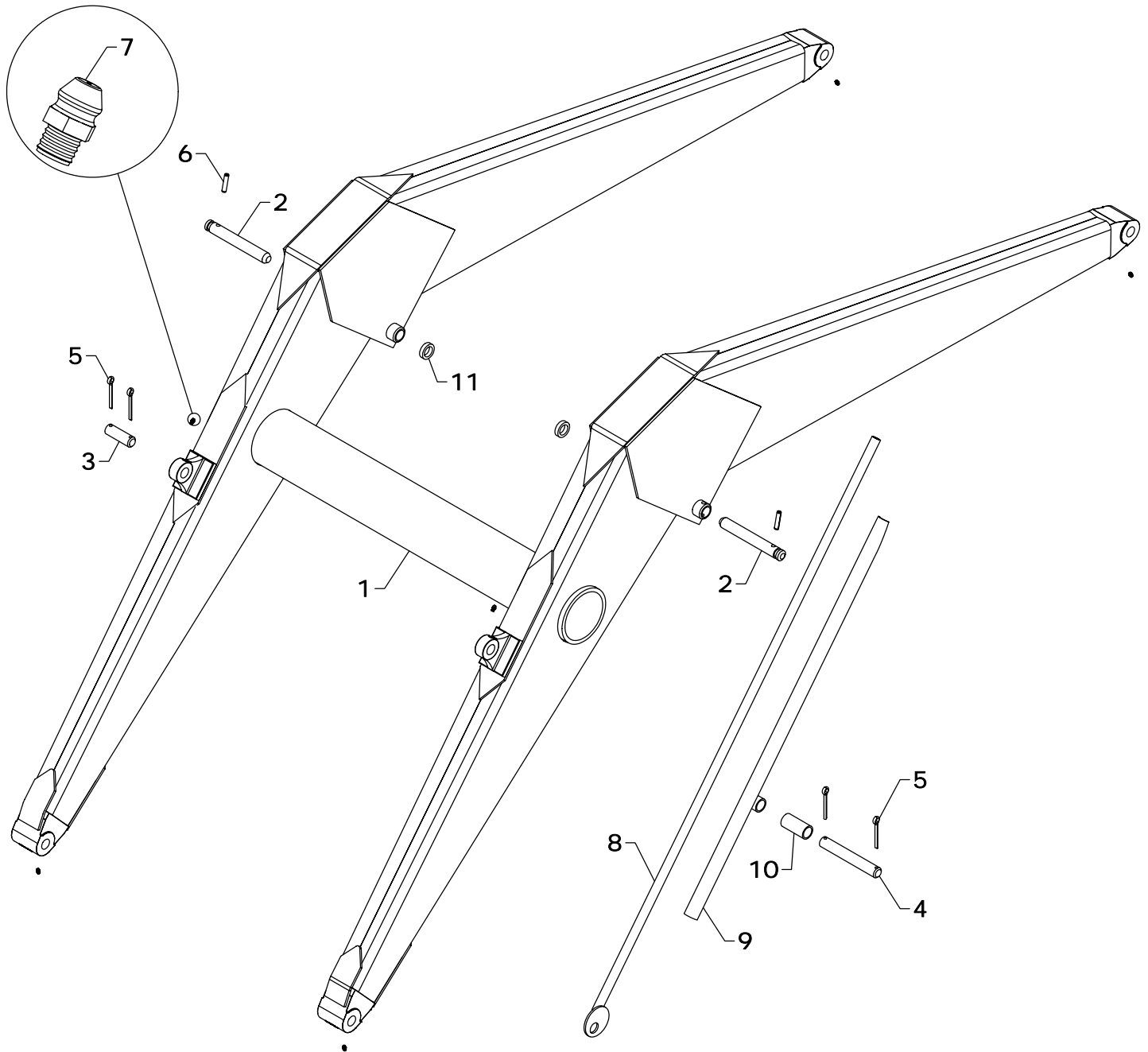
REF #	PART #	DESCRIPTION	QTY.
1	RBT-12AS - L	TOWER (LEFT)	1
2	RBT-12AS - R	TOWER (RIGHT)	1
*	NAT-120COM - R	SLIDE LOCK COMPLETE (RIGHT)	--
*	NAT-120COM - L	SLIDE LOCK COMPLETE (LEFT)	--
3	NAT-120AS - R	SLIDE LOCK (RIGHT)	1
4	NAT-120AS - L	SLIDE LOCK (LEFT)	1
5	NAT-106 - L	DROP LOCK (LEFT)	1
6	NAT-106 - R	DROP LOCK (RIGHT)	1
7	CBF1011056	5/8" X 3 1/2" CARRIAGE BOLT	4
8	NAT-140	BAR CLAMP BOLT	4
9	HTN1011	5/8" LOCK NUT	12

REF #	PART #	DESCRIPTION	QTY.
10	HHS1011028	5/8" X 1 3/4" BOLT	4
11	LWM10	5/8" LOCK WASHER	4
12	0H004	FRONT WRAP **	1
13	JT-20	PIN	4
14	DRP0600028	DOUBLE ROLL PIN	4
15	RT-15AS	SHOE	2
16	HHS1011072	5/8" X 4 1/2" BOLT	4
17	RLG-51	SPRING	2
18	NAT-126	RIVET	2
19	RAF-65	WASHER	2

**NOTE:** \*NAT-120COM - R contains parts 3(1), 6(1), 7(2), 8(2), 9(4), 17(1), 18(1). NAT-120COM - L contains parts 4(1), 5(1), 7(2), 8(2), 9(4), 17(1), 18(1). \*\* Varies by tractor (Standard Wrap is 0H004).

WESTENDORFMFG PWB016130

WESTENDORF MFG CO., INC. • PH: (712) 423-2762 • FAX: (712) 423-1460 • sales@westendorfmfg.com • www.loaders.com



## BASIC LOADER FRAME REPLACEMENT PARTS

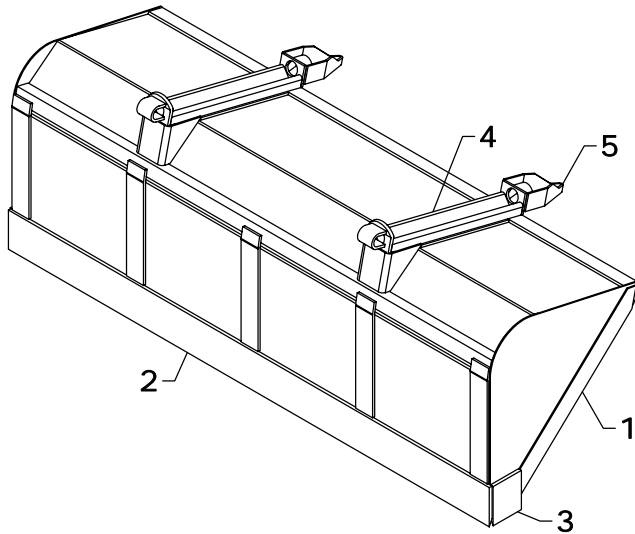
REF #	PART #	DESCRIPTION	QTY.
1	RBF-4AS	FRAME	1
2	LF-82	LIFT PIN	2
3	LF-49	PIN	1
4	BF-59	PIN	1
5	CTK0400032	1/4" X 2" COTTER KEY	4
6	DRP0600028	DOUBLE ROLL PIN	2

REF #	PART #	DESCRIPTION	QTY.
7	ZER1805	GREASE FITTING	6
8	BF-47AS	GAUGE ROD	1
9	BF-50AS	GAUGE ROD HOLDER	1
10	BF-61	BUSHING	1
11	RAT-30	SPACER BUSHING	2

WESTENDORFMFG PWB016130

WESTENDORF MFG. CO., INC. • PH:(712) 423-2762 • FAX: (712) 423-1460 • sales@westendormfg.com • www.loaders.com

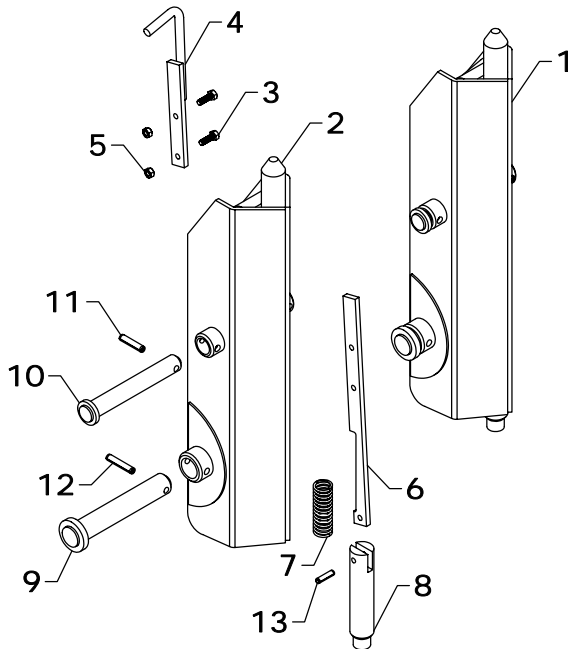
## BUCKET



REF #	PART #	DESCRIPTION	QTY.
1	84Q216	84" BUCKET	1
	84Q225	84" BUCKET	1
	90Q225	90" BUCKET	1
	96Q229	96" BUCKET	1
2	SB-14	84" BLADE	1
	LB-14	90" BLADE	1
	CB-14	96" BLADE	1
3	SB-15	BLADE	2
4	QC-13AS	WELD ON ADAPTER	2
5	JB-22	GUIDE (OPTIONAL)	2

*NOTE: \*Check width of the bucket and use the part number that matches. If your size is not shown, contact Westendorf Mfg. Co.*

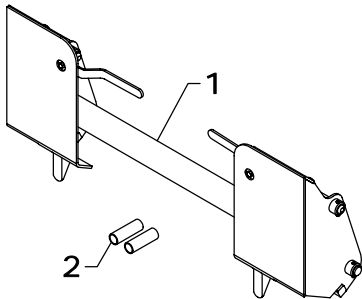
## SNAP-ATTACH™ COUPLER (C-5)



REF #	PART #	DESCRIPTION	QTY.
1	QC-501COM	MALE COUPLER	1
2	QC-501AS	MALE COUPLER	1
3	HHS0518016	5/16" X 1" BOLT	2
4	QC-6AS	LATCH HANDLE	1
5	HTN0518	5/16" LOCK NUT	2
6	QC-8	LATCH	1
7	QC-12	SPRING	1
8	QC-3	BOTTOM LATCH PIN	1
9	QC-206AS	LINKAGE PIN	1
10	LMF-18AS	CYLINDER PIN	1
11	DRP0600028	DOUBLE ROLL PIN	1
12	DRP0600032	DOUBLE ROLL PIN	1
13	RLP0500020	5/16" X 1 1/4" ROLL PIN	1

*NOTE: Qty. shows the number of parts you will receive if you place an order using these part numbers. C-5 is two (QC-501COM) couplers.*

## SKID STEER COUPLER (C-31)



REF #	PART #	DESCRIPTION	QTY.
1	C-31	COUPLER (OPTIONAL)	1
2	BUS-211 KIT	1 1/4" BUSHING KIT	1

## COSMETICS

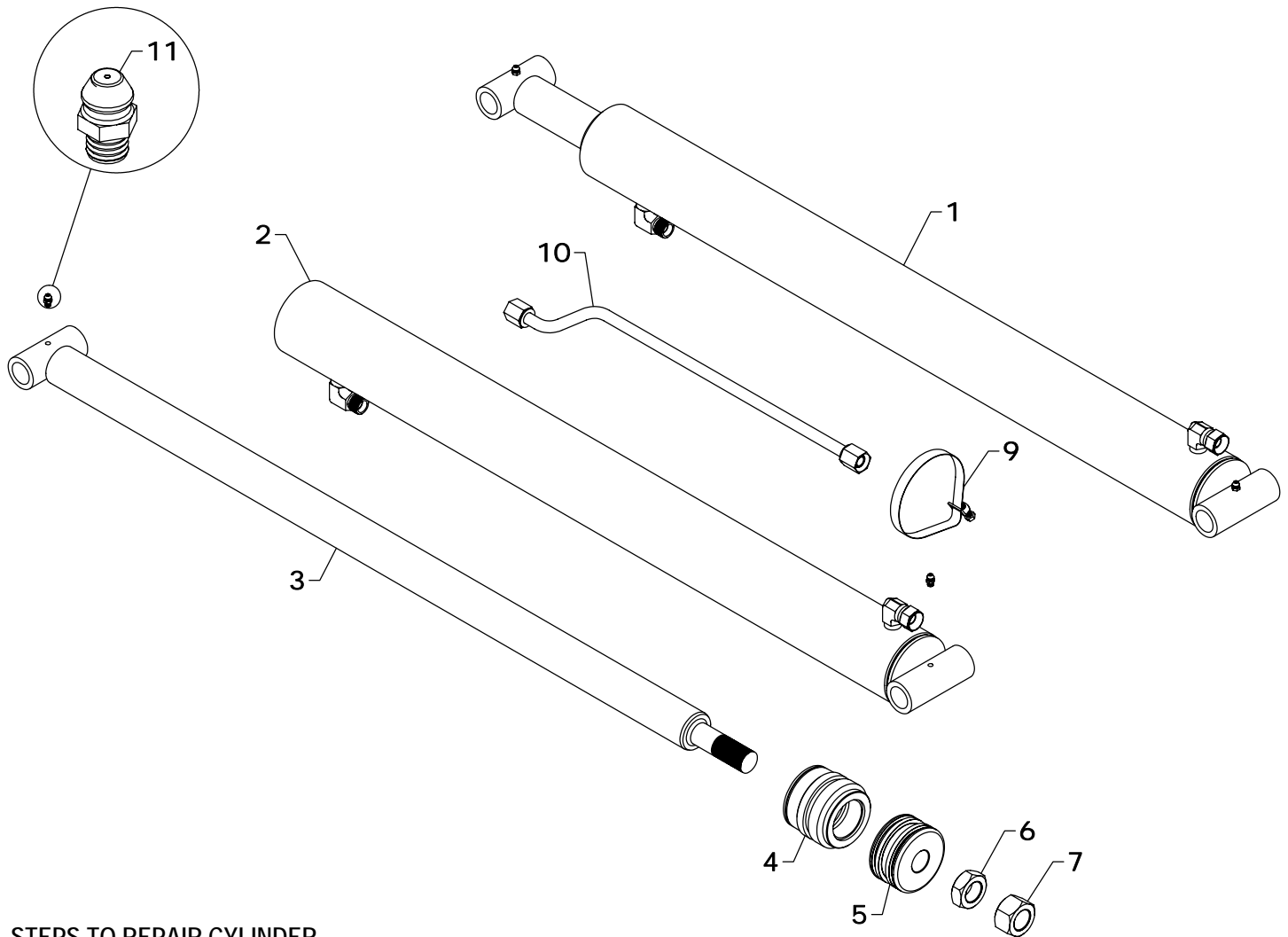
REF #	PART #	DESCRIPTION	QTY.
1	DEC-28	DECAL KIT	1
2	V-5403-A	RED SPRAY PAINT	1
	V-9524-A	BLACK SPRAY PAINT	1

REF #	PART #	DESCRIPTION	QTY.
3	V-9524-P	PINT BLACK PAINT	1
4	V-9524-Q	QUART BLACK PAINT	1
5	V-9524-G	GALLON BLACK PAINT	1

*NOTE: Warning decals are available at no charge. If they become damaged or missing, order part numbers DEC-CW.*

WESTENDORFMFG PWB016130

WESTENDORF MFG. CO., INC. • PH: (712) 423-2762 • FAX: (712) 423-1460 • sales@westendorfmfg.com • www.loaders.com



### STEPS TO REPAIR CYLINDER

- 1) At the ram end of the cylinder barrel, remove the spiral retaining ring from the top of the gland.  
NOTE: The G-E gland does not use the spiral retaining ring.
- 2) Gently drive the gland into the barrel using a brass or non-marring punch until the round retaining ring is visible.
- 3) Remove the round retaining ring using a pair of long nose pliers. Remove the ram assembly (ram, gland, and piston) from the barrel.
- 4) Notice the direction they're pointing so they can be properly re-assembled.
- 5) Remove the jam nut and/or hex nut from the end of the ram.
- 6) Remove the old seals and rings and replace them with the new seals and rings. (Seal kits are packaged for several different cylinders. You may have extra parts)
- 7) Clean cylinder with cleaner and a clean lint free cloth.
- 8) Lubricate the seals and rings to aid assembly.
- 9) Assemble the cylinder by reversing the order.

### CYLINDER REPAIR TIPS

- When disassembling cylinders, keep the parts in correct orientation. Remove parts in sequence.
- Note the direction of the piston and gland. Lay out old seals and parts as they are removed.
- Assemble cylinder in proper order; lubricate to aid assembly.

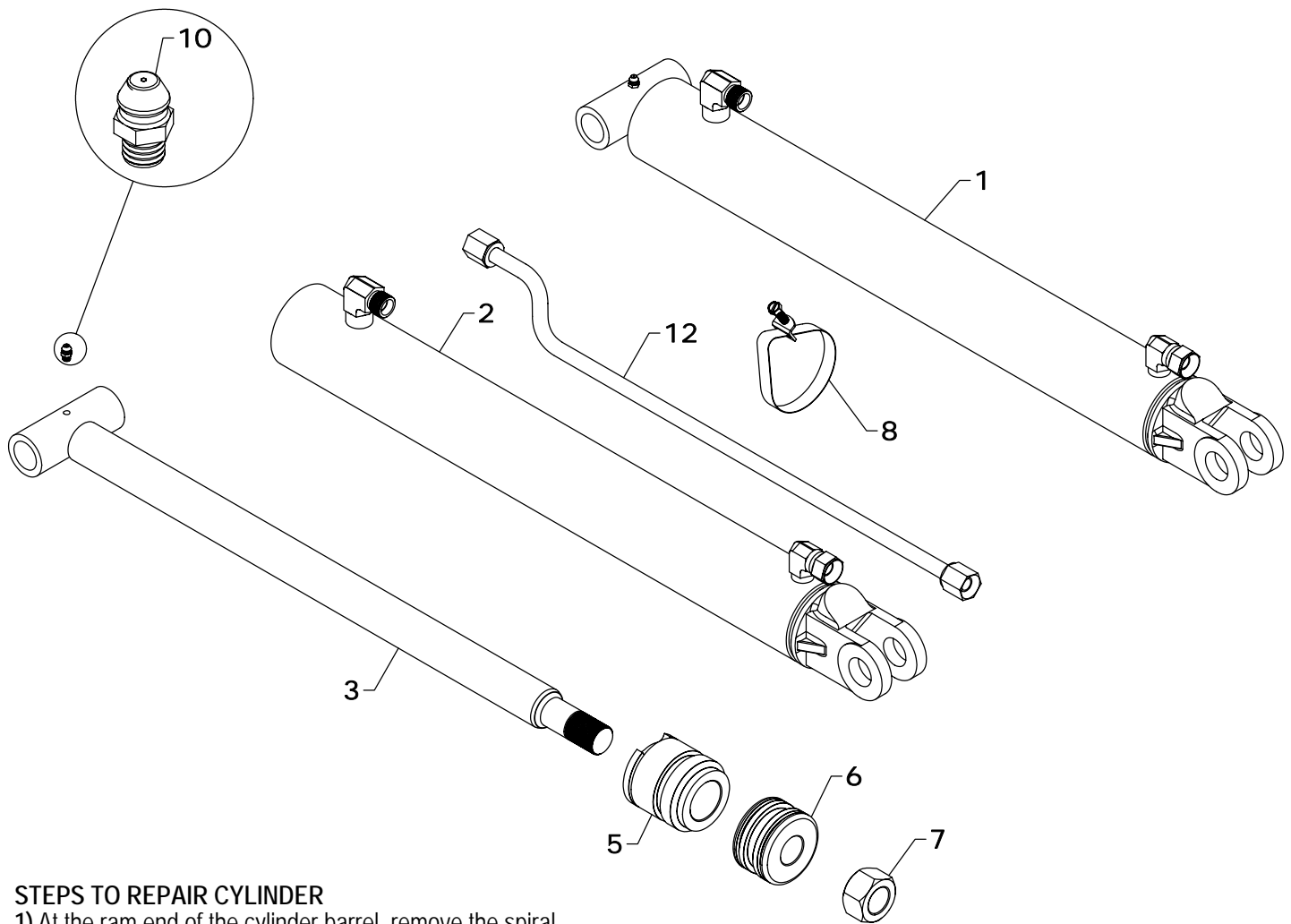
## LIFT CYLINDER REPLACEMENT PARTS

REF #	PART #	DESCRIPTION	QTY.
1	L-28	LIFT CYLINDER	1
2	L-2801	BARREL	1
3	L-2810	RAM	1
4	G-L	GLAND	1
5	P-B	PISTON	1
6	HJN1614	1" JAM NUT	1
7	HFN1614	1" NUT	1
9	BAND-15	METAL BAND	1
10	OLT-143	OIL LINE	1
11	ZER1805	GREASE FITTING	2
12	#4CK	REPAIR KIT *	1

NOTE: \* Repair kit contains parts to repair one cylinder

WESTENDORFMFG PWB016130

WESTENDORF MFG. CO., INC. • PH: (712) 423-2762 • FAX: (712) 423-1460 • sales@westendormfg.com • www.loaders.com



## STEPS TO REPAIR CYLINDER

- 1) At the ram end of the cylinder barrel, remove the spiral retaining ring from the top of the gland.  
NOTE: The G-E gland does not use the spiral retaining ring.
- 2) Gently drive the gland into the barrel using a brass or non-marring punch until the round retaining ring is visible.
- 3) Remove the round retaining ring using a pair of long nose pliers. Remove the ram assembly (ram, gland, and piston) from the barrel.
- 4) Notice the direction they're pointing so they can be properly re-assembled.
- 5) Remove the jam nut and/or hex nut from the end of the ram.
- 6) Remove the old seals and rings and replace them with the new seals and rings. (Seal kits are packaged for several different cylinders. You may have extra parts)
- 7) Clean cylinders with cleaner and a clean lint free cloth.
- 8) Lubricate the seals and rings to aid assembly.
- 9) Assemble the cylinder by reversing the order.

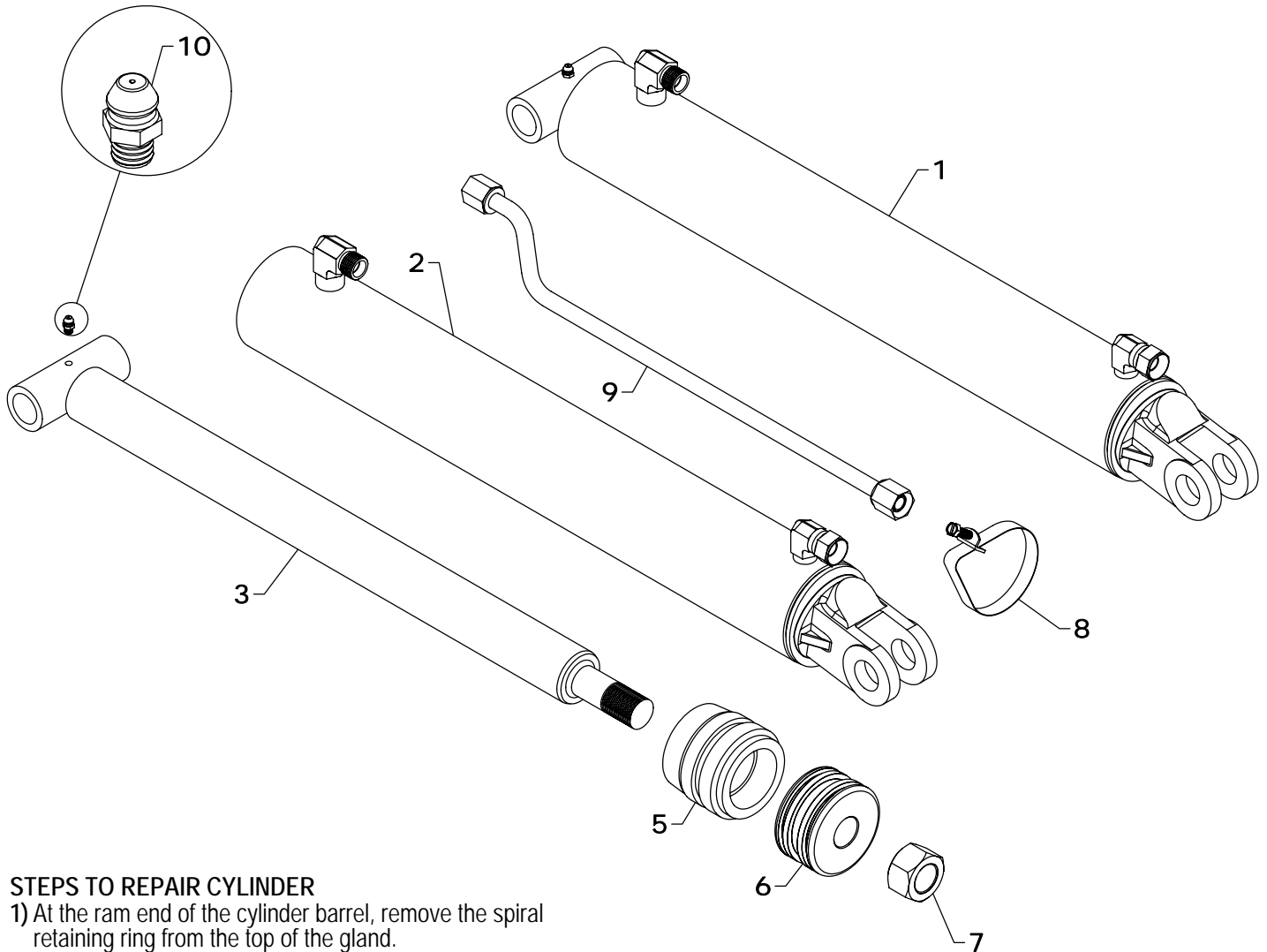
## CYLINDER REPAIR TIPS

- When disassembling cylinders, keep the parts in correct orientation. Remove parts in sequence.
- Note the direction of the piston and gland. Lay out old seals and parts as they are removed.
- Assemble cylinder in proper order; lubricate to aid assembly.

## STANDARD 2 1/2" BUCKET CYLINDER REPLACEMENT PARTS

REF #	PART #	DESCRIPTION	QTY.
1	B-1	BUCKET CYLINDER	1
2	B-101	BARREL	1
3	B-110	RAM	1
5	G-A	GLAND	1
6	P-A	PISTON	1
7	HFN1614	1" NUT	1
8	BAND-12	OIL LINE HOLDER	1
12	OLT-1	OIL LINE	1
10	ZER1805	GREASE FITTING	1
11	#1CK	REPAIR KIT *	1

NOTE: \* Repair kit contains parts to repair one cylinder



## STEPS TO REPAIR CYLINDER

- 1) At the ram end of the cylinder barrel, remove the spiral retaining ring from the top of the gland.  
NOTE: The G-E gland does not use the spiral retaining ring.
- 2) Gently drive the gland into the barrel using a brass or non-marring punch until the round retaining ring is visible.
- 3) Remove the round retaining ring using a pair of long nose pliers. Remove the ram assembly (ram, gland, and piston) from the barrel.
- 4) Notice the direction they're pointing so they can be properly re-assembled.
- 5) Remove the jam nut and/or hex nut from the end of the ram.
- 6) Remove the old seals and rings and replace them with the new seals and rings. (Seal kits are packaged for several different cylinders. You may have extra parts)
- 7) Clean cylinder with cleaner and a clean lint free cloth.
- 8) Lubricate the seals and rings to aid assembly.
- 9) Assemble the cylinder by reversing the order.

## CYLINDER REPAIR TIPS

- When disassembling cylinders, keep the parts in correct orientation. Remove parts in sequence.
- Note the direction of the piston and gland. Lay out old seals and parts as they are removed.
- Assemble cylinder in proper order; lubricate to aid assembly.

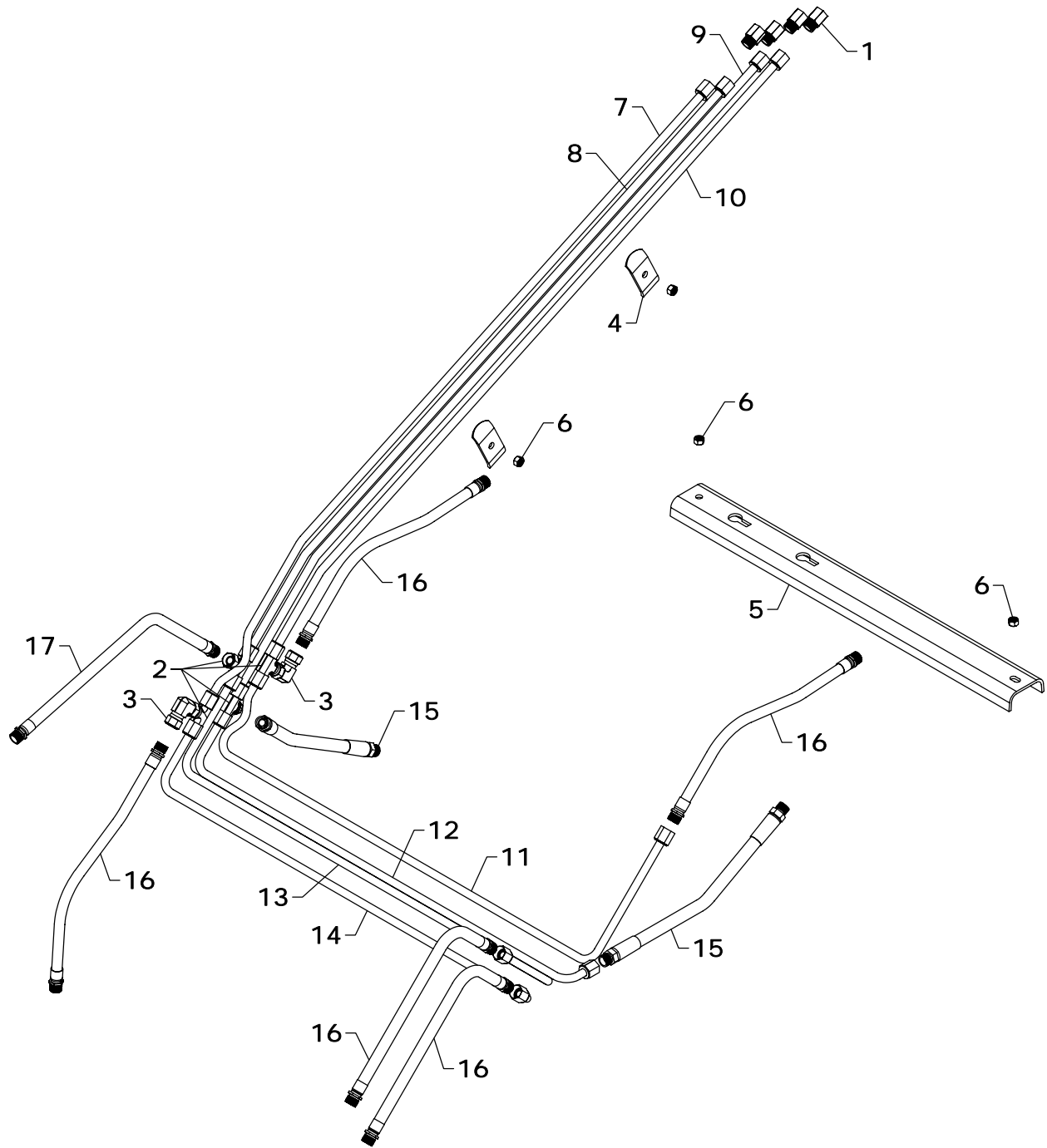
## TA-28C 3" BUCKET CYLINDER REPLACEMENT PARTS

REF #	PART #	DESCRIPTION	QTY.
1	B-4	BUCKET CYLINDER	1
2	B-401	BARREL	1
3	B-410	RAM	1
5	G-E	GLAND	1
6	P-B	PISTON	1
7	HFN1614	1" NUT	1
8	BAND-12	OIL LINE HOLDER	1
9	OLT-143	OIL LINE	1
10	ZER1805	GREASE FITTING	1
11	#4CK	REPAIR KIT *	1

NOTE: \* Repair kit contains parts to repair one cylinder

WESTENDORFMFG PWB016130

WESTENDORF MFG. CO., INC. • PH: (712) 423-2762 • FAX: (712) 423-1460 • sales@westendorfmfg.com • www.loaders.com



## HYDRAULIC LINES

REF #	PART #	DESCRIPTION	QTY.
1	PF-FFC8	FEMALE CONNECTOR	4
2	PF-FSBT8	SWIVEL NUT TEE	4
3	PF-FSE8	SWIVEL NUT ELBOW	2
4	OH-3	OIL LINE HOLDER	2
5	OH-2	OIL LINE PROTECTOR	1
6	HTN0616	3/8" LOCK NUT	4
7	OLT-14	OIL LINE	1
8	OLT-15	OIL LINE	1
9	OLT-16	OIL LINE	1

REF #	PART #	DESCRIPTION	QTY.
10	OLT-17	OIL LINE	1
11	OLT-190	OIL LINE	1
12	OLT-191	OIL LINE	1
13	OLT-192	OIL LINE	1
14	OLT-193	OIL LINE	1
15	H06015-FF	3/8" X 15" HOSE	2
16	H06020-FF	3/8" X 20" HOSE	5
17	H06030-FF	3/8" X 30" HOSE	1

WESTENDORFMFG PWB016130

WESTENDORF MFG. CO., INC. • PH: (712) 423-2762 • FAX: (712) 423-1460 • sales@westendorfmfg.com • www.loaders.com