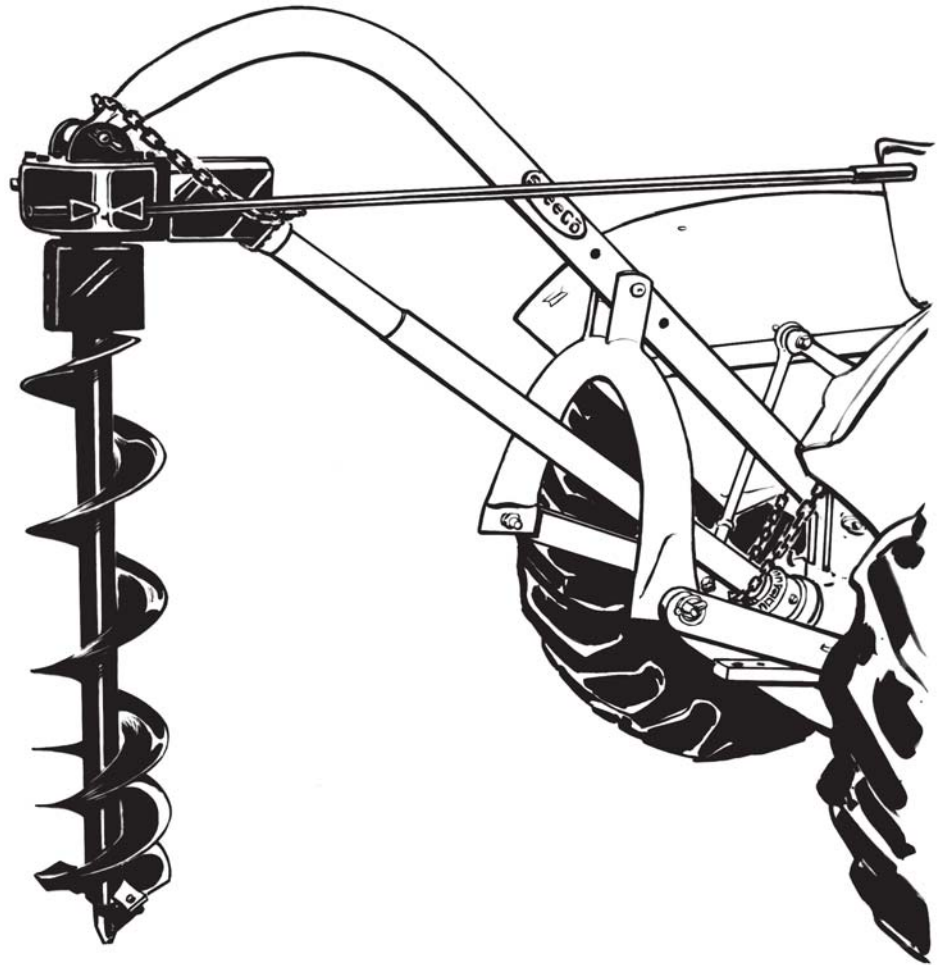




MODEL 65 POST HOLE DIGGER



MODEL NO. 24440 (24044000)

OWNER'S MANUAL

ASSEMBLY & OPERATING INSTRUCTIONS



THIS SAFETY ALERT SYMBOL IDENTIFIES IMPORTANT SAFETY MESSAGES IN THIS MANUAL. FAILURE TO FOLLOW THIS IMPORTANT SAFETY INFORMATION MAY RESULT IN SERIOUS INJURY OR DEATH.

Table of Contents

	Page(s)
Important Safety Information	1-4
Intended Use	1
Personal Protective Equipment	1
Safety Decals	1-3
General Safety and Preparation	3
Operating Safety	3-4
Repair and Maintenance Safety	4
Assembly Instructions	5
General Maintenance	6
Operating Instructions	6
Parts List	7
Parts Breakdown Illustration	8
Cutting Edges and Point Parts List	9
Gear Box Parts List	10
Notes	11
Specifications	Back Cover
Ordering Information	Back Cover



IMPORTANT SAFETY INFORMATION



WARNING: Read and thoroughly understand all instructions and safety information before assembling or operating this post hole digger. Failure to do so may cause serious injury or death. Do not allow anyone to operate this post hole digger who has not read this manual. As with all power equipment a post hole digger can be dangerous if assembled or used improperly. Do not operate this post hole digger if you have doubts or questions concerning safe operation. Call our customer service department at 1-800-525-8322 to address these concerns.

Si no entiende ingles, se prefiere que busque alguien que interprete las instrucciones para usted.

INTENDED USE

This product is designed to dig holes in the soil when attached to the 3-point linkage system and power-take-off of a tractor.

It is **not** intended for any other use. Using the product for anything other than digging holes could result in serious injury or death.

PERSONAL PROTECTIVE EQUIPMENT



ALWAYS use appropriate personal protective equipment such as protective eyewear, earware, gloves, safety shoes and hard hat when operating this post hole digger.

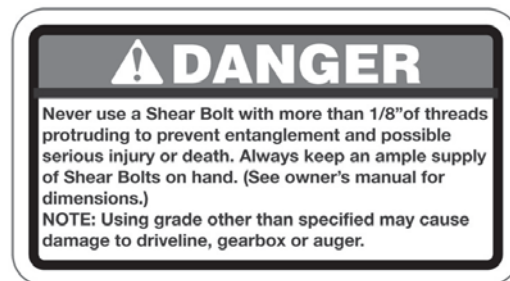
NEVER wear loose clothing or jewelry that could become entangled in the auger or driveline.

SAFETY DECALS

ALWAYS replace missing or defaced decals. Reorder from SpeeCo, Inc., 15000 W. 44th Ave., Golden, CO 80403 or call 1-800-525-8322.



LOCATION: FRONT OF GEAR BOX
PART NUMBER: 52022000



LOCATION: SIDE OF GEAR BOX
PART NUMBER: 52045600



IMPORTANT SAFETY INFORMATION

⚠ DANGER

TO PREVENT SERIOUS INJURY OR DEATH:

Si no entiende ingles, se prefiere que busque a alguien que interprete las instrucciones para usted.

- Read and understand owner's manual before operating.
- Operate only from the tractor seat.
- Stay away from rotating parts. Keep others away.
- Do not dig around underground utility lines without checking with authorities.

PHDC2



**Rotating Parts Hazard
Keep Away**

To Prevent Serious Injury or Death from Rotating Parts

Si no entiende ingles, se prefiere que busque a alguien que interprete las instrucciones para usted.

- Read and understand owner's manual before operating.
- Do not operate without all shields and guards in place.
- Do not use body weight to force the auger into the ground or to locate auger point when auger is turning.
- Keep away from auger, cutting head and driveline when auger is running.

PHDC1

⚠ DANGER

TO PREVENT SERIOUS INJURY OR DEATH:

- Contact dealer, make sure your machine has all current safety guards and shields in place.
- Do not operate without all guards and shields in place.
- Do not operate when auger is higher than 12 inches above ground level. Doing so may cause driveline to bind, resulting in equipment damage or operator injury.
- Stop auger rotation before maneuvering, relocating or transporting.

PHDC3

⚠ DANGER

Do not attach this implement or attempt to operate until you have read and understood all instructions in the owner's manual. If an owner's manual is not available contact:

Special Products Co.
15000 W. 44th Ave.
Golden, CO 80403
Phone: 303-279-5544

PHDC4

LOCATION: BOOM
PART NUMBER: 52033300

⚠ DANGER

TO PREVENT SERIOUS INJURY OR DEATH:

Si no entiende ingles, se prefiere que busque a alguien que interprete las instrucciones para usted.

- Read and understand owner's manual before operating.
- Operate only from the tractor seat.
- Stay away from rotating parts. Keep others away.
- Do not dig around underground utility lines without checking with authorities.

PHDC2



**ROTATING DRIVELINE
CONTACT CAN CAUSE DEATH
KEEP AWAY!**

DO NOT OPERATE WITHOUT -

- All driveline guards, tractor and equipment shields in place
- Drivelines securely attached at both ends
- Driveline guards that turn freely on driveline

⚠ DANGER

TO PREVENT SERIOUS INJURY OR DEATH:

- Contact dealer, make sure your machine has all current safety guards and shields in place.
- Do not operate without all guards and shields in place.
- Do not operate when auger is higher than 12 inches above ground level. Doing so may cause driveline to bind, resulting in equipment damage or operator injury.
- Stop auger rotation before maneuvering, relocating or transporting.

PHDC3

NOTICE

**540 RPM Maximum
PTO Operating Speed**

LOCATION: PTO DRIVE SHAFT SHIELD
PART NUMBER: 52046100

⚠ DANGER



**GUARD MISSING
DO NOT OPERATE**

⚠ DANGER



**GUARD MISSING
DO NOT OPERATE**

⚠ DANGER

LOCATION: PTO DRIVE SHAFT
UNDER SHIELD
ORDER DECAL KIT: 52044100

NOTE: IF THE DRIVE SHAFT GUARD MENTIONED IN THE ABOVE DECAL IS MISSING, YOU MUST ORDER A REPLACEMENT BY CALLING US AT 1-800-525-8322.

⚠ DANGER

Do not attach this implement or attempt to operate until you have read and understood all instructions in the owner's manual. If an owner's manual is not available contact:

Special Products Co.
15000 W. 44th Ave.
Golden, CO 80403
Phone: 303-279-5544

PHDC4

LOCATION: TOP END OF BOOM ON
GEAR BOX END
ORDER DECAL KIT: 52050500



IMPORTANT SAFETY INFORMATION



LOCATION: TOP END OF AUGER TUBE
PART NUMBER: DL52020500

NOTE: IF THE OUTPUT SHAFT GUARD MENTIONED IN THE ABOVE DECAL IS MISSING, YOU MAY ORDER A REPLACEMENT BY CALLING US AT 1-800-525-8322.

GENERAL SAFETY AND PREPARATION

ALWAYS make sure that anyone else who operates this post hole digger has read and understood the contents of the owner's manual and all safety decals on the product.

ALWAYS be certain that all members of the work party are familiar with the operation of the digger and the hazards associated with it.

ALWAYS check with authorities for underground utilities before digging a hole. Serious injury or death could result from contact with gas or electric lines.

ALWAYS check the tractor owner's manual for instructions on operation, attachment of 3-point equipment and safety.

ALWAYS make sure that all safety shields are in place and tightened down. Do not operate this post hole digger if any shields are missing. Contact SpeeCo, Inc. at 1-800-525-8322 for replacement part(s).

ALWAYS make sure that the auger point and cutting edges are intact and in good working order before using this digger.

NEVER allow children or other persons to ride on the Tractor or Implement. Falling off can result in serious injury or death.

NEVER allow children to play on or around Tractor or Implement. Children can slip or fall off the Equipment and be injured or killed. Children can cause the Implement to shift or fall crushing themselves or others.

NEVER allow others within 20 feet while operating the post hole digger.

NEVER operate post hole digger without all guards in place.

ALWAYS ensure the driveline is securely locked onto the PTO.



IMPORTANT SAFETY INFORMATION

OPERATING SAFETY

ALWAYS operate this post hole digger from the tractor seat. Only one person should operate the digger.

NEVER attach the post hole digger with the tractor engine running.

NEVER operate the post hole digger with anyone near or in contact with any part of the implement, PTO driveline or auger. Serious injury or death could result from entanglement with moving parts.

ALWAYS make sure that the tractor brake is set before digging a hole.

ALWAYS keep hands, feet and clothing away from power-driven parts during operation.

NEVER manually position the auger or manually force the auger into the ground.

ALWAYS make sure that the tractor engine is shut off and the PTO drive is disengaged before leaving the tractor seat.

NEVER move the tractor with the power-take-off in the ON position.

NEVER exceed 540 RPM PTO operating speed.

NEVER operate the post hole digger when the auger point is more than 6 in. above ground level. Operating the digger in elevated positions may cause the PTO driveline "U" joints to bind resulting in equipment damage and operator injury.

ALWAYS turn off the digger immediately if an immovable object is encountered to prevent damage to the gear box or driveshaft and possible injury. A shear bolt is provided but may become welded to the input shaft if the driveshaft is left running after being sheared.

TRANSPORTATION SAFETY

NEVER allow anyone to ride on Implement.

Make certain the slow moving (SMV) sign and other reflectors are clearly visible. Follow local traffic codes for slow moving vehicles when transporting on public roads.

REPAIR AND MAINTENANCE SAFETY

ALWAYS perform maintenance operations such as lubrication, adjustments or repairs on the post hole digger with the tractor engine off, the PTO drive disengaged and the auger point resting on the ground.

ALWAYS use the correct shear bolt (Grade 5). **NEVER** use or replace the shear bolt with one that is longer than the one specified in the manual (5/16" x 2-1/2").

Periodically inspect all moving parts for wear and replace when necessary with authorized service parts. Look for loose fasteners, worn or broken parts, and leaky or loose fittings. Serious injury may occur from not maintaining this machine in good working order.

Do not modify or alter this Implement. Do not permit another to modify or alter this Implement, any of its components or any Implement function. Any modification will void the warranty.

ASSEMBLY INSTRUCTIONS

IMPORTANT: The gear box is shipped without lubricant. Fill the top hole with 80W-90 lubricant or the equivalent. Fill until the lube appears at the side level check hole. Approximately two pints or two pounds of the lubricant is enough to lubricate the gears and bearings. A greater amount will not harm the gear box. Do not fill to overflow point as this may damage the seals.

STEP 1: Be certain that the gear box has adequate lubrication. Check the oil level after every fifty hours of use.

STEP 2: Attach the boom (1) to the top link mounting bracket on the tractor using a top link pin and a lynch pin (not provided) through the hole at the bottom of the boom.

STEP 3: Connect the "A" frame (5) to the tractor's 3-point lift arms using the 7/8 in. pull pins with nut and lockwasher (5A) as shown in the drawing. Attach the "A" frame (5) to the boom (1) after selecting the desired hole (for angle adjustment) using the "A" frame pin (6) and lynch pin (4).

STEP 4: Attach the gear box (10) to the boom (1) using the boom pin (2). When in place secure with cotter pins (3). NOTE: Input shaft shield (9) and output shaft shield (12) are already attached to the gear box.

STEP 5: Attach the auger (20, 21 or 22) to the output shaft on the bottom of the gear box (10) using the 1/2 in. hex cap screws (17), 1/2 in. lockwashers (18) and 1/2 in. hex nuts (19). Tighten the nuts.

STEP 6: Attach the driveline (13) to the gear box input shaft using the 5/16 in. grade 5 hex cap screw (14), the 5/16 in. lockwasher (15) and the 5/16 in. NC hex nut (16). Tighten the hex nut. Insert the 1/4 in. x 3/8 in. set screw from the hardware kit in the hole on the yoke that aligns with the 3/16 in. groove on the gear box input shaft. Tighten.

ATTENTION: THE 5/16 IN. HEX CAP SCREW PROVIDES SHEAR PROTECTION. USE A GRADE 5 2-1/2" BOLT ONLY TO AVOID DAMAGE TO THE GEAR BOX OR AUGER.

IMPORTANT: The universal joint should be greased with a good grade chassis lube every week. At the beginning of each season grease the sliding driveshaft members with a moly grease. All diggers are equipped with quick-detach universal joints on the power-take-off end for a 1-3/8 in. splined shaft.

STEP 7: Attach the tractor end of the driveline (13) to the tractor PTO shaft. Push in the spring-loaded pin in the splined yoke (13C) and slip it on the splined PTO shaft of the tractor. Release the pin and push until it locks securely in place. It will be necessary to obtain a 1-1/8 in. to 1-3/8 in. sleeve spline adapter if your tractor PTO shaft has a 1-1/8 in. spline.

STEP 8: Attach and secure both chains on the driveline to the boom (1). See illustration A.

STEP 9: Attach the handle (8) to the gear box (10) and secure with the 5/16 in. set screw (11). Tighten.

STEP 10: Check all nuts and bolts for tightness. Stabilizers should be kept tight to avoid side sway of the digger.

NOTE: See illustration A for reference in assembling the digger and mounting it to the tractor. Note that the boom angle can be adjusted on your tractor for proper digging and ground clearance by moving the "A" frame to a different mounting hole as shown in illustration B.

NOTE: When the 7/8 in. diameter pull pins in the "A" frame are too small for the holes in the lift arms, bushings should be used to obtain a proper fit.



ILLUSTRATION A

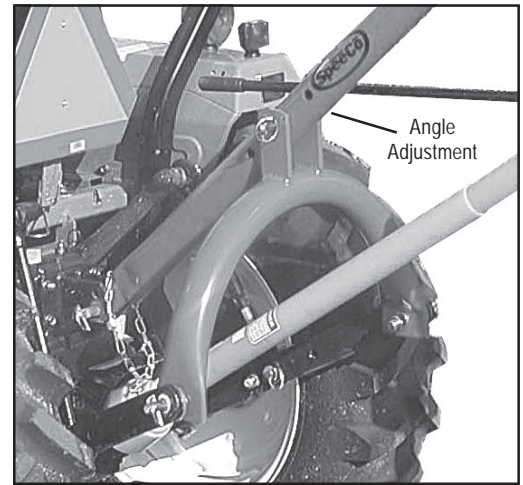


ILLUSTRATION B

OPERATING INSTRUCTIONS



WARNING: *Read and thoroughly understand all instructions and safety information before operating this post hole digger. Failure to do so may cause serious injury or death. Do not allow anyone to operate this post hole digger who has not read this manual.*

STEP 1: After mounting the digger to the tractor, lower the auger point slowly to the ground at the desired digging angle before engaging power.

STEP 2: Engage the power-take-off and start digging at a slow speed, lowering the auger slowly as it begins to dig.

STEP 3: Increase speed as the auger goes deeper. The type of soil will determine the proper auger speed. If the soil is extremely hard, it will generally improve operation to vary the speed of the auger at times.

STEP 4: When the auger has reached the desired depth, spin it momentarily at a high speed to clear the hole of dirt. Reduce speed before withdrawing the auger from the hole.

STEP 5: Disengage the power-take-off after withdrawing from the hole and move the tractor to the next hole location.

GENERAL MAINTENANCE

REFER TO ILLUSTRATION C



WARNING: *Always perform maintenance operations with the tractor engine off, the PTO drive disengaged and the auger point resting on the ground.*

1. To remove the auger from the gear box output shaft, take out the two 1/2 in. x 3 in. hex cap screws (17).
2. To remove the driveshaft from the gear box input shaft, take out the shear pin bolt (14) and 1/4 in. set screw (13E).
3. To remove the auger control handle (8), loosen the 5/16 in. set screw (11) in the side of the gear box (10).
4. Check the oil level after every fifty hours of use. Use 80W-90 lubricant and fill to oil level plug. All replacement lubricant should be of this type.
5. The universal joints should be greased with a good grade chassis lube every week. At the beginning of each season, grease the sliding driveshaft members with a moly grease.

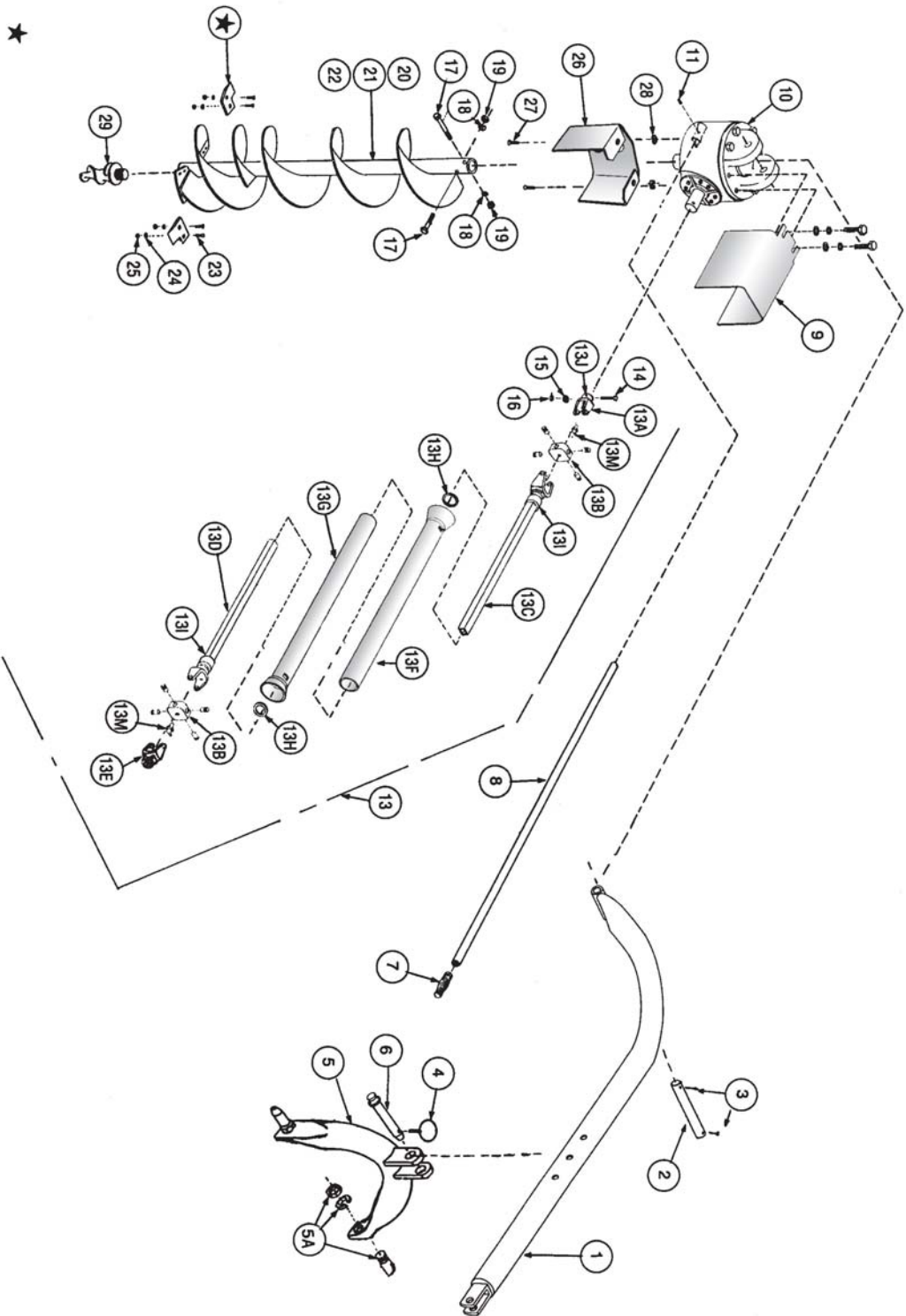
MODEL 65 POST HOLE DIGGER PARTS BREAKDOWN

REFERENCE NUMBER	PART NUMBER	DESCRIPTION	NUMBER REQUIRED
	24044000	Model 65 Post Hole Digger less Auger	1
1	240840CH	Boom	1
2	24082300	Boom Pin	1
3	O/L	5/32 in. x 1-1/2 in. Cotter Pin	2
4	07090100	7/16 in. Lynch Pin	1
5	240839CH	"A" Frame	1
5A	07020800	7/8 in. Pull Pin with Nut and Lockwasher	2
6	07071500	"A" Frame Pin	1
7	24082200	Handle Grip	1
8	24084100	Control Rod	1
9	24075100	Gear Box Input Guard	1
10	240701AS	Gear Box Assembly	1
10A	24078300	Gear Box Bearing & Seal Kit	1
11	O/L	5/16 in. Set Screw	1
12	24070700	Gear Box Output Guard	1
13	240602HZ	Driveline with Plastic Shield	1
13A	241110HZ	Guard Assembly	1
13B	240615HZ	Cross and Bearing Kit	2
13C	240616HZ	Push Pin Yoke	1
13D	24112800	Implement End Yoke	1
13E	O/L	1/4" x 3/8" Pointed Set Screw	1
14	O/L	5/16 in. x 2-1/2 in. Hex Cap Screw (Grade 5 Shear Bolt)	1
15	O/L	5/16 in. Lockwasher	1
16	O/L	5/16 in. NC Hex Nut	1
17	O/L	1/2 in. NC x 3 in. Hex Cap Screw	2
18	O/L	1/2 in. Lockwasher	2
19	O/L	1/2 in. NC Hex Nut	2
20	240515A0	6 in. Auger with Screw Point and Cutting Edges	1
21	240525A0	9 in. Auger with Screw Point and Cutting Edges	1
	24052900	9 in. Heavy Duty Auger with Screw Point and Cutting Edges	1
22	240535A0	12 in Auger with Screw Point and Cutting Edges	1
	24053600	12 in. Heavy Duty Auger with Screw Point and Cutting Edges	1
			as required
			as required

O/L- Obtain locally. Common fasteners available through hardware and farm stores.

MODEL 65 POST HOLE DIGGER

ILLUSTRATION C



See Illustration D for Cutting Edges



NOTE: Safety shields are shaded on this diagram. NEVER operate the digger with any shield missing.

CUTTING EDGES AND POINT PARTS BREAKDOWN

REFERENCE NUMBER	PART NUMBER	DESCRIPTION	NUMBER REQUIRED
1	24056700	6 in. Cutting Edge	2
2A	24057700	9 in. Outer Cutting Edge	1
2B	24057800	9 in. Inner Cutting Edge	1
3	24058700	12 in. Outer Cutting Edge	1
4	24058800	12 in. Inner Cutting Edge	1
5	24059200	Screw Point with 1-1/4 in. NC Threads	1
6	O/L	3/8 in. NC x 1-1/4 Carriage Bolt	4
7	O/L	3/8 in. Lockwasher	4
8	O/L	3/8 in. NC Hex Nut	4
--	240567ZBU	6 in. Cutting Edge Set	1
--	240579ZBU	9 in. Cutting Edge Set	1
--	240589ZBU	12 in. Cutting Edge Set	1

O/L- Obtain locally. Common fasteners available through hardware and farm stores

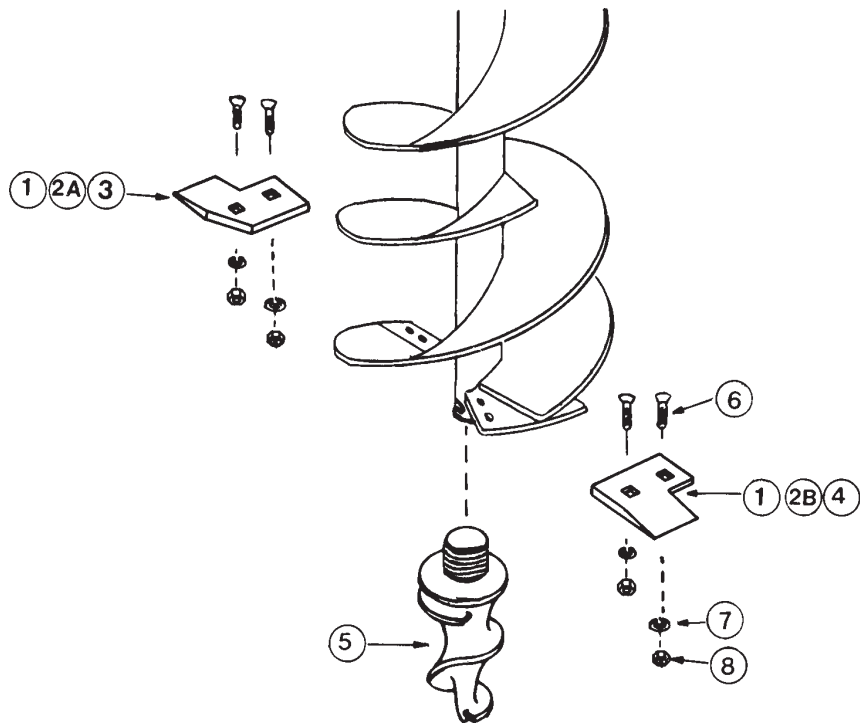


ILLUSTRATION D

NOTE: It is important to replace the self-sharpening point on the auger when it shows signs of excessive wear. Generally, the digging life of the point will be greater than that of the inner cutting edge. The digging life of the inner cutting edge will be greater than that of the outer cutting edge since it covers fewer inches of digging circumference.

== **NOTES** ==

Model No. _____

Date of Purchase _____

Place of Purchase _____

SPECIFICATIONS

Tractor Category	Category 1 or 2
Gear Box	Special alloy pinion gears and tapered roller bearings on both sides of each gear
Gears	Heat-treated to Rockwell C30-40 to a depth of .030-.040
Driveline	Equipped with quick-tach yoke to fit standard 6-spline PTO (completely shielded)
Cutting edges	Beveled, high carbon steel, replaceable
Augers	6 in., 9 in. and 12 in. sizes available that all dig to a full depth of 45 in. Anti-auger plates to prevent it from screwing into soft soils
Boom	2-7/8 in. O.D. high strength tubing
A-frame	2-7/8 in. high strength tubing
Safety shields	On driveline, gear box "U" joint and gear box output shaft
Shear pin	On input shaft to protect driveline, auger and gears. Replaceable.

ORDERING INFORMATION

PART NUMBER	DESCRIPTION
24044000	Model 65 post hole digger less auger
240515A0	6 in. auger with screw point and replaceable cutting edges
240525A0	9 in. auger with screw point and replaceable cutting edges
24052900	9 in. heavy duty auger with screw point and replaceable cutting edges
240535A0	12 in. auger with screw point and replaceable cutting edges
24053600	12 in. heavy duty auger with screw point and replaceable cutting edges
24059200	Screw point
24567ZBU	6 in. cutting edge set
24579ZBU	9 in. cutting edge set
24589ZBU	12 in. cutting edge set



A brand of Special Products Co.

15000 W. 44th Ave. Golden Colorado 80403

303-279-5544 Toll Free USA 800-525-8322 Fax 303-278-3432

Email: speeco@speeco.com Web: www.speeco.com