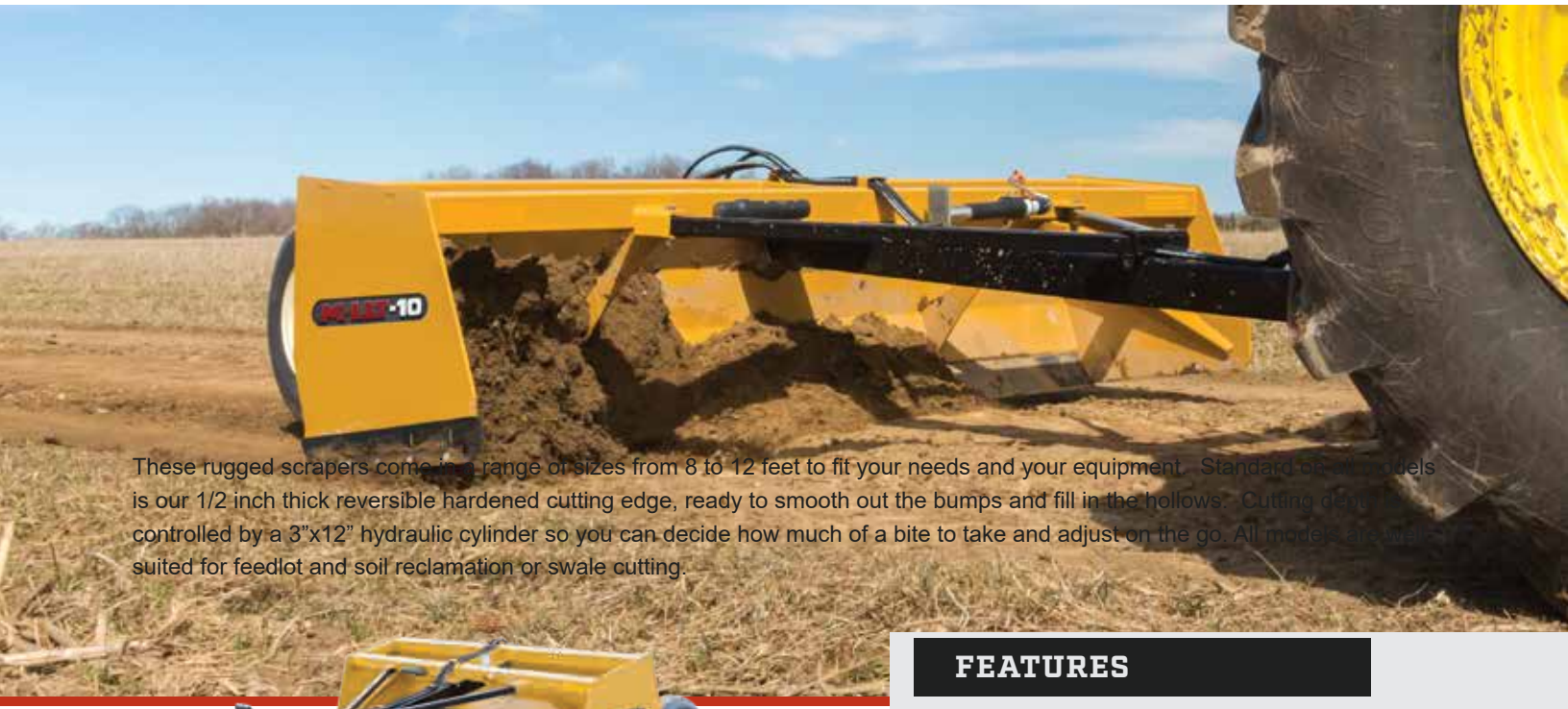


Land Levelers



These rugged scrapers come in a range of sizes from 8 to 12 feet to fit your needs and your equipment. Standard on all models is our 1/2 inch thick reversible hardened cutting edge, ready to smooth out the bumps and fill in the hollows. Cutting depth is controlled by a 3"x12" hydraulic cylinder so you can decide how much of a bite to take and adjust on the go. All models are well suited for feedlot and soil reclamation or swale cutting.



FEATURES

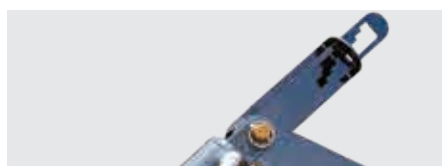
- 1/2" x 6" reversible hardened cutting edge
- Equipped with a 15" jac
- 3" x 12" hydraulic lift cylinder
- 3" x 6" cylinder to tilt 10° each way
- GPS Mount read

TRAILED MODEL SPECIFICATIONS

Trailed Models	LLT-8	LLT-10	LLT-12
Width	8'	10'	12'
Mount	Hitch	Hitch	Hitch
Horse Power (Max.)	165	165	165
Tilt	Yes	Yes	Yes
Cutting Edge	Single	Single	Single
Side Plate	3/8"	3/8"	3/8"
Mouldboard	1/4"	1/4"	1/4"
Mouldboard Height	30"	30"	30"
Mouldboard Depth	32"	32"	32"
Wear Plate	NA	NA	NA
Skidbar	1/2" Reversible	1/2" Reversible	1/2" Reversible
Weight	1,555	1,771	1,898
List Price	\$9,995.00	\$10,740.00	\$11,325.00



ADJUSTABLE SKID BARS



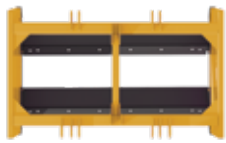
TILT INDICATOR



TRANSPORT LOCK



Grader Levelers



Top View



FEATURES

- Two 1/2" x 6" Reversible Cutting Edges
- 3/8" x 2 Reversible Skid Shoe
- Cutting edges can be manually adjuste to your desired cutting depth for optimal performance
- Order Mount separately (3PH o Skidsteer Adaptor)

OPTIONS

- Mount – Select the correct mount fo application at time of order

SPECIFICATIONS

Model	Working Width	Overall Width	Skid Shoes	Mouldboard Thickness	Cutting Edge	Weight (LBS.)	List Price
MKGL578	60"	65"	3/8" x 2 Reversible	1/4"	1" Adjustment	600	\$3,185.00
MKGL678	72"	77"	3/8" x 2 Reversible	1/4"	1" Adjustment	665	\$3,365.00
MKGL778	84"	89"	3/8" x 2 Reversible	1/4"	1" Adjustment	730	\$3,665.00
MKGL878	96"	101"	3/8" x 2 Reversible	1/4"	1" Adjustment	796	\$3,895.00

NOTE: Hitch must be ordered separately.

OPTIONS

Options	Part #	Weight (LBS.)	List Price
Optional Skidsteer Adapter	MKGLSSMNT	156	\$990.00
Optional 3PH Adapter (Cat. 1 & 2)	MKGL3PTMNT	36	\$385.00



Angled Grader Levelers



Top View



FEATURES

- Two angled 1/2" x 6" Reversible Cutting Edges
- Cutting Edge Angled between 5° - 9° depending on model
- 3/8" x 2 Reversible Skid Shoe
- Cutting edges can be manually adjusted to you desired cutting depth for optimal performance
- Order Mount separately (3PH or Skidsteer Adaptor)

OPTIONS

- Mount – Select the correct mount fo application at time of order

SPECIFICATIONS

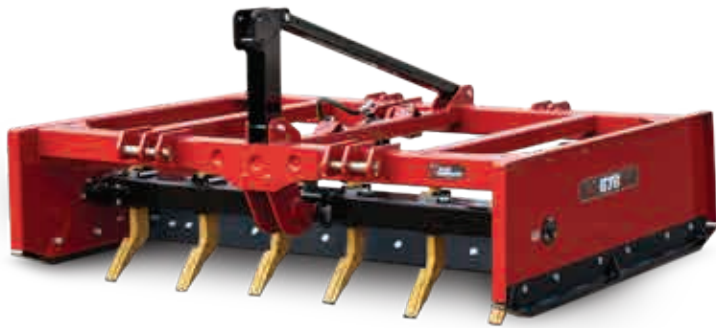
Model	Working Width	Overall Width	Skid Shoes	Mouldboard Thickness	Cutting Edge	Cutting Angle (Deg.)	Weight (LBS.)	List Price
MKGL578A	60"	65"	3/8" x 2 Reversible	1/4"	1" to -0.5"	9	568	\$3,205.00
MKGL678A	72"	77"	3/8" x 2 Reversible	1/4"	1" to -0.5"	7	632	\$3,390.00
MKGL778A	84"	89"	3/8" x 2 Reversible	1/4"	1" to -0.5"	6	697	\$3,685.00
MKGL878A	96"	101"	3/8" x 2 Reversible	1/4"	1" to -0.5"	5	761	\$3,910.00

NOTE: Hitch must be ordered separately.

OPTIONS

Options	Part #	Weight (LBS.)	List Price
Optional Skidsteer Adapter	MKGLSSMNT	156	\$990.00
Optional 3PH Adapter (Cat. 1 & 2)	MKGL3PTMNT	36	\$385.00





FEATURES

- Two ½" x 6" Reversible Cutting Edges
- 3/8" x 2 Reversible Skid Shoe
- Cutting Edges are adjustable in 1 increments for optimal performance
- Hydraulically adjustable scarifier bar
- Grader quality shanks with replaceable tip
- Order Mount separately (3PH or Skidsteer Adapter)
- AR400 Abrasion-Resistant Skid Shoes

OPTIONS

- Mount – Select the correct mount for application at time of order

SPECIFICATIONS

Model	MKLP678	MKLP778	MKLP878
Working Width	72"	84"	96"
Overall Width	77"	89"	101"
Length	69.5"	69.5"	69.5"
Shank (Qty.)	6	6	8
Shank Tube		4" x 6" x ¼"	
Cutting Edge (x2)	Hardened ½" - Reversible 1" Adjustments		
Skid Shoes	3/8" x 2 Reversible		
Cylinder	Dual Hydraulic Cylinders for shank rotation		
Weight (LBS.)	1,140	1,240	1,350
List Price	\$6,055.00	\$6,395.00	\$6,970.00

NOTE: Hitch must be ordered separately.

OPTIONS

Options	Part #	Weight (LBS.)	List Price
Optional Skidsteer Adapter	MKLPSSMNT	156	\$990.00
Optional 3PH Adapter (Cat. 1 & 2)	MKLP3PTMNT	36	\$385.00

