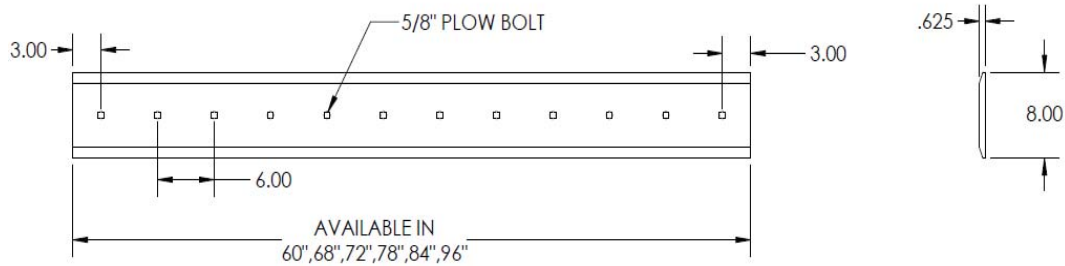
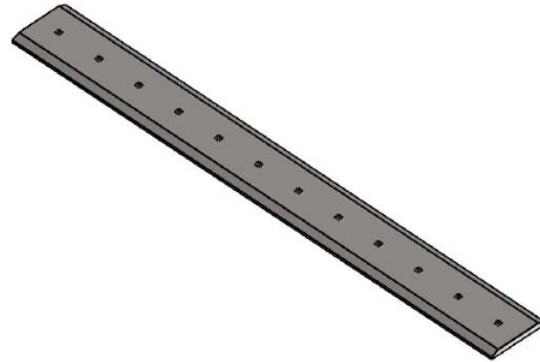


Bolt-On Cutting Edge



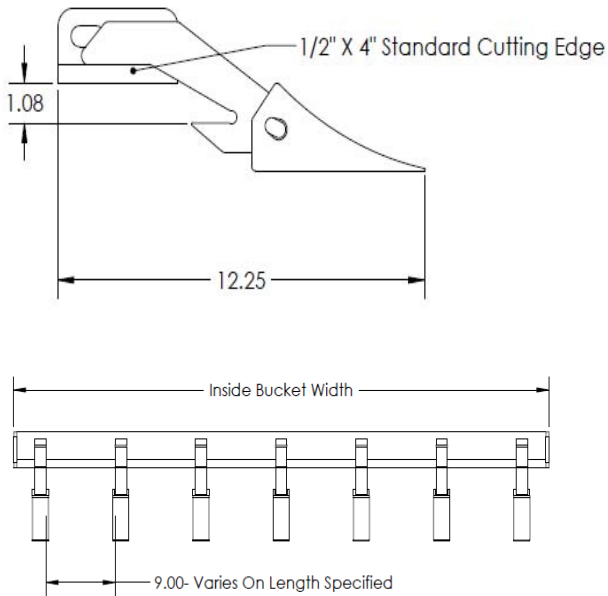
Model	Description	Weight
33193	60" / 10 Hole	80 lbs
33194	68" / 11 Hole	91 lbs
33050	72" / 12 Hole	96 lbs
33201J-07	78" / 13 Hole	105 lbs
33051	84" / 14 Hole	112 lbs
33052	96" / 16 Hole	128 lbs
33230	102" / 17 Hole	136 lbs
33231	108" / 18 Hole	144 lbs






Durable construction for years of use

5/8" x 8" Double Bevel Grade 1080

Bolt-On Tooth Bar

60" Model #33208, 68" Model #33209,
72" Model #33039, 78" Model #33210,
80" Model #33211, 84" Model #33164



-  Durable construction for years of use
-  Excellent tool for loosening compacted soil or grubbing out rocks
-  Adaptable to most tractor and skid steer loader buckets
-  An economical and convertible alternative to bolt-on or weld-on individual teeth
-  Replacement teeth available

Specifications

Designed for buckets with 3/4" thick Cutting Edge (Fits all Legend Buckets)	
For other Bucket Models - Specify inside bucket width when ordering	
Overall Width	Varies by bucket width
Overall Depth	12 1/4"
Material	Grade 50 Steel
Weight	60" (81 lbs.), 68" (92 lbs.) 72" (97 lbs.), 78" (105 lbs.) 80" (108 lbs.), 84" (114 lbs)

