



HD0936

- 1 1/16" x 3 1/2" Class II hook type solid fork lift tines
- 900 lbs capacity @ 21" L.C.
- Sliding adjustable
- Tines can be locked in any position
- 50" wide carriage

Light Duty Pallet Fork	Tine Length	Weight	Part #	Price Code			
				A	B	C	D
900 LB Capacity		in lbs					
Light Duty Pallet Fork incl. Tines	36"	190	HD0936	\$925.00	\$1,043.00	\$1,161.00	
Light Duty Pallet Fork incl. Tines	42"	205	HD0942	\$949.00	\$1,067.00	\$1,185.00	
Light Duty Pallet Fork incl. Tines	48"	215	HD0948	\$999.00	\$1,117.00	\$1,235.00	
Carriage Only Less Tines			HD09	\$589.00	\$707.00	\$825.00	



HD1242

- 1 1/16" x 3 1/2" Class II hook type solid fork lift tines
- 1200 lbs capacity @ 24" L.C.
- Sliding adjustable
- Tines can be locked in any position
- 50" wide carriage

Light Duty Pallet Fork	Tine Length	Weight	Part #	Price Code			
				A	B	C	D
1200 LB Capacity		in lbs					
Light Duty Pallet Fork incl. Tines	36"	285	HD1236	\$1,006.00	\$1,124.00	\$1,242.00	
Light Duty Pallet Fork incl. Tines	42"	315	HD1242	\$1,030.00	\$1,148.00	\$1,266.00	
Light Duty Pallet Fork incl. Tines	48"	325	HD1248	\$1,080.00	\$1,198.00	\$1,316.00	
Carriage Only Less Tines			HD12	\$670.00	\$788.00	\$906.00	



HD2042

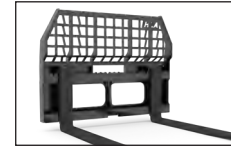
- 1 1/2" x 3 1/8" Class II hook type solid fork lift tines
- 2000 lbs capacity @ 24" L.C.
- Incl. guard
- 50" wide carriage

Heavy Duty Pallet Fork	Tine Length	Weight	Part #	Price Code			
				A	B	C	D
2000 LB Capacity		in lbs					
Heavy Duty Pallet Fork incl. Guard - Tines	36"	310	HD2036	\$1,155.00	\$1,273.00	\$1,391.00	
Heavy Duty Pallet Fork incl. Guard - Tines	42"	340	HD2042	\$1,191.00	\$1,309.00	\$1,427.00	
Heavy Duty Pallet Fork incl. Guard - Tines	48"	350	HD2048	\$1,205.00	\$1,323.00	\$1,441.00	
Carriage Only incl. Guard Less Tines			HD20	\$695.00	\$813.00	\$931.00	



HD4248

- 1-3/8" x 4" Class II hook type solid fork lift tines
- 4200 lbs capacity @ 20" L.C.
- incl. guard
- 50" wide carriage
- Sliding adjustable
- Tines can be locked in any position



**Full Back Guard Option
(Brick Guard)**
HD42BG - add \$174.00

Heavy Duty Pallet Fork	Tine Length	Weight	Part #	Price Code			
				A	B	C	D
4200 LB Capacity		in lbs					
Heavy Duty Pallet Fork incl. Guard - Tines	42"	405	HD4242	\$1,328.00	\$1,446.00	\$1,564.00	\$1,713.00
Heavy Duty Pallet Fork incl. Guard - Tines	48"	425	HD4248	\$1,390.00	\$1,508.00	\$1,626.00	\$1,775.00
Carriage Only incl. Guard Less Tines			HD42	\$732.00	\$850.00	\$968.00	\$1,117.00



HD5548

- 1½" x 4" Class II hook type solid fork lift tines
- 5500 lbs capacity @24" L.C.
- Incl. guard
- 50" wide carriage
- Sliding adjustable
- Tines can be locked in any position



**Full Back Guard Option
(Brick Guard)**
HD55BG - add \$205.00

Heavy Duty Pallet Fork	Tine Length	Weight	Part #	Price Code			
				A	B	C	D
5500 LB Capacity		in lbs					
Heavy Duty Pallet Fork incl. Guard - Tines	42"	455	HD5542	\$1,557.00	\$1,675.00	\$1,793.00	\$1,942.00
Heavy Duty Pallet Fork incl. Guard - Tines	48"	480	HD5548	\$1,619.00	\$1,737.00	\$1,855.00	\$2,004.00
Heavy Duty Pallet Fork incl. Guard - Tines	54"	495	HD5554	\$1,881.00	\$1,999.00	\$2,117.00	\$2,266.00
Heavy Duty Pallet Fork incl. Guard - Tines	60"	515	HD5560	\$2,067.00	\$2,185.00	\$2,303.00	\$2,452.00
Heavy Duty Pallet Fork incl. Guard - Tines	72"	570	HD5572	\$2,711.00	\$2,829.00	\$2,947.00	\$3,096.00
Carriage Only incl. Guard Less Tines			HD55	\$937.00	\$1,055.00	\$1,173.00	\$1,322.00



HD7548

- 1¾" x 5" Class III hook type solid fork lift tines
- 7500 lbs capacity @ 24" L.C.
- Incl. guard
- 50" wide carriage
- Sliding adjustable
- Tines can be locked in any position



**Full Back Guard Option
(Brick Guard)**
HD75BG - add \$484.00

Heavy Duty Pallet Fork	Tine Length	Weight	Part #	Price Code			
				A	B	C	D
7500 LB Capacity		in lbs					
Heavy Duty Pallet Fork incl. Guard - Tines	48"	590	HD7548	\$2,643.00	\$2,761.00	\$2,879.00	\$3,028.00
Heavy Duty Pallet Fork incl. Guard - Tines	54"	620	HD7554	\$2,841.00	\$2,959.00	\$3,077.00	\$3,226.00
Heavy Duty Pallet Fork incl. Guard - Tines	60"	650	HD7560	\$3,263.00	\$3,381.00	\$3,499.00	\$3,648.00
Heavy Duty Pallet Fork incl. Guard - Tines	72"	730	HD7572	\$3,411.00	\$3,529.00	\$3,647.00	\$3,796.00
Carriage Only incl. Guard Less Tines			HD75	\$1,141.00	\$1,259.00	\$1,377.00	\$1,526.00

Pallet Forks



Prices Effective as of 1-26



HD10048

- 2" x 6" Class III hook type solid fork lift tines
- 10,000 lbs capacity @ 24" L.C.
- Incl. guard
- Sliding adjustable
- Tines can be locked in any position
- 50" wide carriage



Full Back Guard Option (Brick Guard)

HD100BG - add \$484.00

Heavy Duty Pallet Fork 10,000 LB Capacity	Tine Length	Weight in lbs	Part #	Price Code			
				A	B	C	D
Heavy Duty Pallet Fork incl. Guard - Tines	48"	690	HD10048	\$3,424.00	\$3,542.00	\$3,660.00	\$3,809.00
Heavy Duty Pallet Fork incl. Guard - Tines	54"	735	HD10054	\$3,658.00	\$3,776.00	\$3,894.00	\$4,043.00
Heavy Duty Pallet Fork incl. Guard - Tines	60"	770	HD10060	\$3,882.00	\$4,000.00	\$4,118.00	\$4,267.00
Heavy Duty Pallet Fork incl. Guard - Tines	72"	840	HD10072	\$4,974.00	\$5,092.00	\$5,210.00	\$5,359.00
Carriage Only incl. Guard Less Tines			HD100	\$1,612.00	\$1,730.00	\$1,848.00	\$1,997.00



HDR5548

- Rotation is powered by a cylinder for smooth and contoured operation
- Adjustable tines
- Rotates 180° for a full dump to the left

Rotating Pallet Fork	Tine Length	Weight in lbs	Part #	Price Code			
				A	B	C	D
2000 lbs Rotating Pallet Fork	42"	815	HDR2042	\$4,520.00	\$4,638.00	\$4,756.00	\$4,905.00
4200 lbs Rotating Pallet Fork	42"	825	HDR4242	\$6,065.00	\$6,183.00	\$6,301.00	\$6,450.00
4200 lbs Rotating Pallet Fork	48"	840	HDR4248	\$6,127.00	\$6,245.00	\$6,363.00	\$6,512.00
5500 lbs Rotating Pallet Fork	42"	840	HDR5542	\$6,647.00	\$6,765.00	\$6,883.00	\$7,032.00
5500 lbs Rotating Pallet Fork	48"	860	HDR5548	\$6,709.00	\$6,827.00	\$6,945.00	\$7,094.00
5500 lbs Rotating Pallet Fork	54"	880	HDR5554	\$6,971.00	\$7,089.00	\$7,207.00	\$7,356.00
2000 lbs Carriage Only Less Tines			HDR20	\$4,024.00	\$4,142.00	\$4,260.00	\$4,409.00
4200 lbs Carriage Only Less Tines			HDR42	\$5,469.00	\$5,587.00	\$5,705.00	\$5,854.00
5500 lbs Carriage Only Less Tines			HDR55	\$6,027.00	\$6,145.00	\$6,263.00	\$6,412.00
Optional 90" Hose Kit incl. Flat Faced Couplers			HK90	\$329.00			
Optional Spring Hose Mount Kit			SHMK	\$149.00			



HDO5542

- Rotation is powered by a cylinder for smooth operation
- Adjustable tines
- Levels 45 degrees each way
- Great for uneven job sites

Power Tilting Pallet Fork	Tine Length	Weight in lbs	Part #	Price Code			
				A	B	C	D
5500 lbs Power Tilting Pallet Fork	42"	750	HDO5542	\$7,509.00	\$7,627.00	\$7,745.00	\$7,894.00
5500 lbs Power Tilting Pallet Fork	48"	770	HDO5548	\$7,571.00	\$7,689.00	\$7,807.00	\$7,956.00
5500 lbs Power Tilting Pallet Fork	54"	790	HDO5554	\$7,833.00	\$7,951.00	\$8,069.00	\$8,218.00
7500 lbs Power Tilting Pallet Fork	48"	940	HDO7548	\$8,570.00	\$8,688.00	\$8,806.00	\$8,955.00
7500 lbs Power Tilting Pallet Fork	54"	970	HDO7554	\$8,768.00	\$8,886.00	\$9,004.00	\$9,153.00
5500 lbs Carriage Only Less Tines			HDO55	\$6,889.00	\$7,007.00	\$7,125.00	\$7,274.00
7500 lbs Carriage Only Less Tines			HDO75	\$7,068.00	\$7,186.00	\$7,304.00	\$7,453.00
Optional 90" Hose Kit incl. Flat Faced Couplers			HK90	\$329.00			
Optional Spring Hose Mount Kit			SHMK	\$149.00			





Pallet Forks



HDS5548

- Hydraulic carriage side shift
- 16" travel (8" right or left)
- Adjustable tines

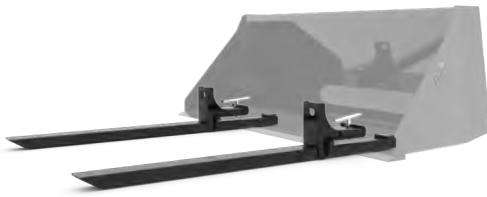
Side Shift Pallet Fork	Tine Length	Weight in lbs	Part #	Price Code			
				A	B	C	D
4200 lbs Side Shift Pallet Fork	42"	730	HDS4242	\$3,839.00	\$3,957.00	\$4,075.00	\$4,224.00
4200 lbs Side Shift Pallet Fork	48"	750	HDS4248	\$3,901.00	\$4,019.00	\$4,137.00	\$4,286.00
5500 lbs Side Shift Pallet Fork	42"	750	HDS5542	\$4,080.00	\$4,198.00	\$4,316.00	\$4,465.00
5500 lbs Side Shift Pallet Fork	48"	770	HDS5548	\$4,142.00	\$4,260.00	\$4,378.00	\$4,527.00
5500 lbs Side Shift Pallet Fork	54"	790	HDS5554	\$4,404.00	\$4,522.00	\$4,640.00	\$4,789.00
4200 lbs Carriage Only Less Tines			HDS42	\$3,243.00	\$3,361.00	\$3,479.00	\$3,628.00
5500 lbs Carriage Only Less Tines			HDS55	\$3,460.00	\$3,578.00	\$3,696.00	\$3,845.00
Optional 90" Hose Kit incl. Flat Faced Couplers			HK90	\$329.00			
Optional Spring Hose Mount Kit			SHMK	\$149.00			



HDN7554

- Hydraulic sliding tines
- Ideal for clamping (Such as a root ball in nurseries etc.)
- Hydraulic powered tines move in and out equally

Power Tine Pallet Fork	Tine Length	Weight in lbs	Part #	Price Code			
				A	B	C	D
4200 lbs Power Tine Pallet Fork	42"	680	HDN4242	\$3,925.00	\$4,043.00	\$4,161.00	\$4,310.00
4200 lbs Power Tine Pallet Fork	48"	700	HDN4248	\$3,993.00	\$4,111.00	\$4,229.00	\$4,378.00
5500 lbs Power Tine Pallet Fork	42"	680	HDN5542	\$4,148.00	\$4,266.00	\$4,384.00	\$4,533.00
5500 lbs Power Tine Pallet Fork	48"	700	HDN5548	\$4,210.00	\$4,328.00	\$4,446.00	\$4,595.00
5500 lbs Power Tine Pallet Fork	54"	720	HDN5554	\$4,322.00	\$4,440.00	\$4,558.00	\$4,707.00
7500 lbs Power Tine Pallet Fork	48"	810	HDN7548	\$6,238.00	\$6,356.00	\$6,474.00	\$6,623.00
7500 lbs Power Tine Pallet Fork	54"	840	HDN7554	\$6,430.00	\$6,548.00	\$6,666.00	\$6,815.00
7500 lbs Power Tine Pallet Fork	60"	865	HDN7560	\$7,068.00	\$7,186.00	\$7,304.00	\$7,453.00
Optional 90" Hose Kit incl. Flat Faced Couplers			HK90	\$329.00			
Optional Spring Hose Mount Kit			SHMK	\$149.00			



BFT6544 (bucket not included)

- 1.25" opening for bucket edge
- No tools or bolts needed

Bucket Pallet Fork	Size	Weight	UOM	Part #	Price
1000 LB Bucket Pallet Fork incl. Hardware	3" x 2" x 32" Long	78 lbs	set	BFT3532	\$620.00
2000 LB Bucket Pallet Fork incl. Hardware	4" x 2" x 44" Long	143 lbs	set	BFT6544	\$794.00



Pallet Forks



Prices Effective as of 1-26



LGSA

- Removable log grapple for pallet forks
- Clamps onto Class II or III fork frame (walk through guards only)
- Incl. Hydraulic cylinder

Single Arm Log Grapple	Weight	Part #	Price
	in lbs		
Single Arm Log Grapple To Fit Class II Rail (HD20, HD42, HD55)	195	LGSA	\$1,718.00
Single Arm Log Grapple To Fit Class III Rail (HD75, HD100)	205	LGSAC3	\$2,003.00



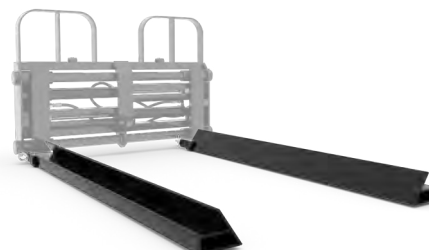
LG5542

- Grapple version of HD55/HD75 pallet fork
- 42" solid fork lift tines
- 5500/7500 lbs capacity
- Incl. HD Cylinders

Log Grapple	Weight	Part #	Price Code			
			A	B	C	D
Log Grapple Mounted On HD55 Pallet Fork incl. Cylinders & 42" Tines	800	LG5542	\$3,900.00	\$4,018.00	\$4,136.00	\$4,285.00
Log Grapple Mounted On HD55 Pallet Fork incl. Cylinders & 48" Tines	820	LG5548	\$3,962.00	\$4,080.00	\$4,198.00	\$4,347.00
Log Grapple Mounted On HD75 Pallet Fork incl. Cylinders & 48" Tines	1030	LG7548	\$5,979.00	\$6,097.00	\$6,215.00	\$6,364.00
Log Grapple Mounted On HD75 Pallet Fork incl. Cylinders & 54" Tines	1060	LG7554	\$6,177.00	\$6,295.00	\$6,413.00	\$6,562.00
Optional Mesh Guard		LGGU	\$602.00			
Optional 90" Hose Kit incl. Flat Faced Couplers		HK90	\$329.00			
Optional Spring Hose Mount Kit		SHMK	\$149.00			



HDEX6 (fork not included)



HDNEX6 (fork not included)

Standard Extensions

- Fits HD42 & HD55 forks

Nursery extensions

- With angle pad for gentle clamping of root balls, etc
- NOTE: Tine extensions reduce the capacity of your pallet fork

Pallet Fork Tine Extensions	Weight	UOM	Part #	Price
6' Standard Pallet Fork Tine Extensions	181 lbs	set	HDEX6	\$918.00
8' Standard Pallet Fork Tine Extensions	238 lbs	set	HDEX8	\$1,228.00
6' Nursery Pallet Fork Tine Extensions	210 lbs	set	HDNEX6	\$906.00
7' Nursery Pallet Fork Tine Extensions	244 lbs	set	HDNEX7	\$1,054.00



Prices and Specifications may be subject to change without notice. Prices do not include shipping or setup.

Tines



Prices Effective as of 1-26

Tines	UOM	Part #	Price
32" Conus II Straight Kverneland Tine Used In Bale Spear	ea	SDE32	\$131.00
39" Conus II Straight Kverneland Tine Used In Bale Spear	ea	SDE39	\$143.00
49" Conus II Straight Kverneland Tine Used In Bale Spear	ea	SDE49	\$168.00
36" Tine For HD09 & HD12 Pallet Fork	ea	HD0936	\$168.00
42" Tine For HD09 & HD12 Pallet Fork	ea	HD0942	\$180.00
48" Tine For HD09 & HD12 Pallet Fork	ea	HD0948	\$205.00
36" Tine For HD20 Pallet Fork	ea	HD236	\$230.00
42" Tine For HD20 Pallet Fork	ea	HD242	\$248.00
48" Tine For HD20 Pallet Fork	ea	HD248	\$255.00
42" Tine For HD42 Pallet Fork	ea	HD442	\$298.00
48" Tine For HD42 Pallet Fork	ea	HD448	\$329.00
42" Tine For HD55 Pallet Fork	ea	HD542	\$310.00
48" Tine For HD55 Pallet Fork	ea	HD548	\$341.00
54" Tine For HD55 Pallet Fork	ea	HD554	\$472.00
60" Tine For HD55 Pallet Fork	ea	HD560	\$565.00
72" Tine For HD55 Pallet Fork	ea	HD572	\$887.00
48" Tine For HD75 Pallet Fork	ea	HD748	\$751.00
54" Tine For HD75 Pallet Fork	ea	HD754	\$850.00
60" Tine For HD75 Pallet Fork	ea	HD760	\$1,061.00
72" Tine For HD75 Pallet Fork	ea	HD772	\$1,135.00
48" Tine For HD100 Pallet Fork	ea	HD1048	\$906.00
54" Tine For HD100 Pallet Fork	ea	HD1054	\$1,023.00
60" Tine For HD100 Pallet Fork	ea	HD1060	\$1,135.00
72" Tine For HD100 Pallet Fork	ea	HD1072	\$1,681.00



Prices and Specifications may be subject to change without notice. Prices do not include shipping or setup.