



# DRIVE LIKE A PRO

## ONE-PERSON POST DRIVER

**NO Springs NO Cylinder NO Return Line**

- Hydraulic grapple option allows one person to pick up, load, and drive posts. Tilt option available.
- Free fall weight design creates smooth operation with less shock back to the vehicle.
- 3/4" steel plate protects the top of the post from Hammer weight damage.
- Maximum impact force achieved with every stroke.
- Ability to short stroke to fine tune post depth.
- Top of post is contained preventing kickout.
- No setup required, it's ready to go to work.
- 1-Year Warranty.



## MODELS

Recommended 75 HP & above tractors. DO NOT exceed the tractor loader rated operating capacity. Use sufficient counterweights.

### SM40

Skid-Steer Quick Attach Mounting Plate (Shown with tilt option)



### LM40

Offset Skid-Steer Quick Attach Mounting Plate for Front-End Loaders



### EM40

Offset Euro/Global Quick Attach Mounting Plate for Front-End Loaders



Contact Danuser for excavator mount options.

# ACCESSORIES / OPTIONS

## Floating Horseshoe Plate



PN 21212

Recommended when driving smaller diameter pipe. Aids in keeping the pipe centered in the driver and reduces wear and tear on machine. Does not interfere with the operation of the grapple. Works with 5" diameter and smaller and with T-post adapter.

## Guard Rail Plate



PN 21280

Recommended when driving 6" or 8" I beams. Aids in keeping the guard rail from twisting and shifting.

## Donut Plate



PN 21395

Recommended when driving smaller diameter pipe. More effective than the Horseshoe Strike Plate in keeping the pipe centered and reduces wear and tear on the machine. Makes grappling of pipe more challenging. Works best when using a helper to position pipe in the Hammer. Works with 5" diameter and smaller and with T-post adapter.

SM40 with grapple option

## T-Post Adapter (PN 21149)



Must be added for driving T-posts.

## Additional Weight Kit (not shown) (PN 21163)

Adds 200 lbs. to machine weight for 60% more impact force.

## Concrete Breaker Kit (PN 21278)

Replaces hammer weight with 500-lb. breaker attachment. Breaks up to 9" thick reinforced concrete. Delivers up to 82000 lbs. of impact force with each cycle. Kit includes additional hardware.



## Grapple Option (not shown)

May be added to any base model machine for one-person operation.

## Tilt Option (not shown)

May be added to any base model machine for tilt up to 20° left or right.

## Optional Tilt Wiring Harnesses



8-Pin or 14-Pin Pigtail  
PN 21220



Battery Connection Wiring Harness  
PN 21253

# SPECIFICATIONS

Tilt (left or right)	20°
Machine Weight*1	880-1116 lbs.
Hammer Weight*2	Standard 300 lbs. (Additional Weight 500 lbs. max.)
Length of Stroke	40"
Max. Strokes Per Minute	35
Hydraulic Requirements*3	1500-3000 PSI 12 to 30 GPM
Max. Post Size	8.5" x 9.25"
Impact Force	82000 lbs. w/ 500-lb. weight
Impact Energy	1025 ft.-lbs. w/ 300-lb. weight; 1709 ft.-lbs. w/ 500-lb. weight

\*1 Weights given without additional weight option.

\*2 Additional weight kit (PN 21163) adds 200 lbs. to machine weight for 60% more impact force.

\*3 Hammer will still operate on machines with less than 12 GPM, but with fewer strokes per minute.



## A HISTORY OF INNOVATION

Established in 1910, DANUSER has been family owned and operated by four generations. We have manufactured auger systems since the mid-1940's. With decades of design and manufacturing experience, our machines have stood the test of time. Today our commitment to our customer remains to design and build products that are the benchmark of quality, reliability, and longevity. In the words of our founder K.B. Danuser, "Good enough won't do – it must be right."

DANUSER manufactures several attachments for various equipment, serving several industries worldwide. Please visit [www.danuser.com](http://www.danuser.com) to see our full line of attachments.

Danuser reserves the right to make changes in design, specifications, and prices without notice and without incurring any obligation relating to such changes.



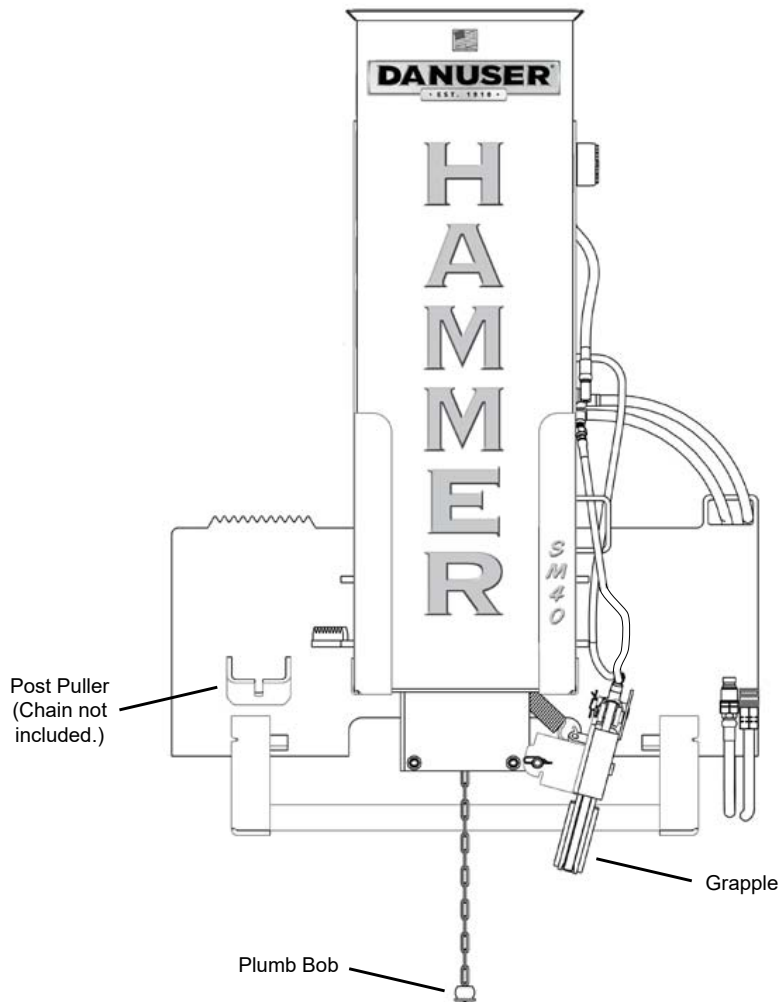
Visit [danuser.com](http://danuser.com) for more Danuser attachments.





# HAMMER SERIES PRICE LIST

1-Year Warranty



## HAMMER SERIES

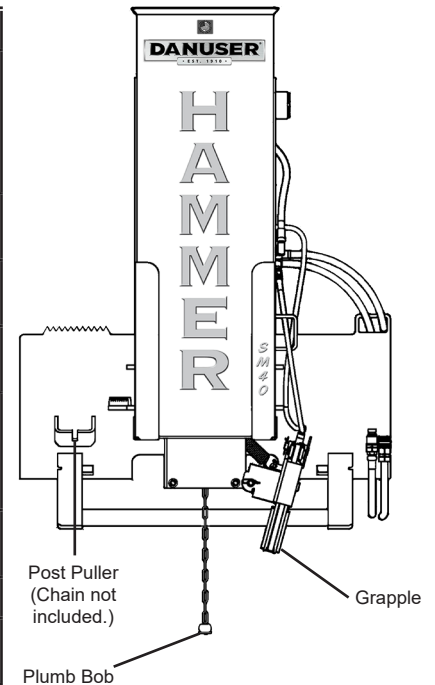
### 1-Year Warranty

**⚠ WARNING** This product can expose you to chemicals known to the State of California to cause cancer and birth defects or other reproductive harm. For more information go to [www.P65Warnings.ca.gov/product](http://www.P65Warnings.ca.gov/product).

### SKID-STEER MOUNT

**NOTE: If post/pipe diameter is 4" O.D. or smaller, PN 21212 or PN 21395 must be installed**

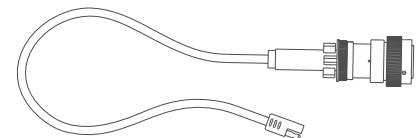
PN	DESCRIPTION	WT.	PRICE
21000	<b>Hammer SM40</b> Hydraulic continuous chain drive, 300 lb. hammer weight (500 lbs. max.), 40" stroke, up to 35 strokes per minute, drives T-post up to railroad ties. Integrated post puller to be used with log chain. <b>Includes</b> hoses with 1/2" flush-face couplers (ISO 16028).	915	\$7,175.00
21000L	<b>Hammer SM40 Loaded</b> <b>Includes</b> factory-installed additional weight kit	1115	\$7,660.00
21001	<b>Hammer SM40 with Grapple</b> Grapple for one-man operation.	955	\$7,865.00
21001L	<b>Hammer SM40 with Grapple Loaded</b> <b>Includes</b> grapple and factory-installed additional weight kit	1155	\$8,350.00
21002	<b>Hammer SM40 with Tilt</b> Tilt left or right up to 20°. <b>Includes</b> diverter switch and cigarette lighter adapter that connects to a power port or cigarette lighter inside the cab.	1005	\$9,655.00
21002L	<b>Hammer SM40 with Tilt Loaded</b> <b>Includes</b> tilt and factory-installed additional weight kit	1205	\$10,145.00
21003	<b>Hammer SM40 with Grapple and Tilt</b>	1045	\$10,345.00
21003L	<b>Hammer SM40 with Grapple and Tilt Loaded</b> <b>Includes</b> grapple, tilt, and factory-installed additional weight kit	1245	\$10,835.00



### OPTIONAL WIRING HARNESSES

Allow Hammer Tilt function operation from vehicle joy stick controls. Replace cigarette lighter plug on SM40, LM40, or EM40 standard harness.

PN	DESCRIPTION	WT.	PRICE
21220-1	<b>Wiring Harness 8-Pin</b> Used on ASV, Caterpillar, Komatsu, Terex	2	\$192.00
21220-2	<b>Wiring Harness 14-pin</b> Used on Bobcat (prior to 1999), Case, Kubota, New Holland, Takeuchi, Volvo	2	\$192.00
21220-3	<b>Wiring Harness 14-pin Deere</b> Used on John Deere	2	\$192.00
21220-4	<b>Wiring Harness 14-pin Caterpillar</b> Used on Caterpillar	2	\$192.00
21220-5	<b>Wiring Harness 14-pin</b> Used on Bobcat (1999 and current), Gehl	2	\$192.00
*21220-U1	<b>Wiring Harness 8-pin</b> Universal wiring harness. Contacts are crimped on wire but not installed in connector.	2	\$192.00
*21220-U2	<b>Wiring Harness 14-pin</b> Universal wiring harness. Contacts are crimped on wire but not installed in connector.	2	\$192.00

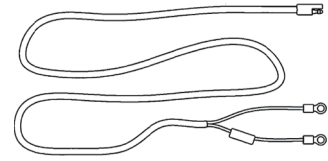


Danuser LLC takes care to ensure the accuracy of the information contained in this price sheet. We assume no liability for errors contained herein. It is the responsibility of the installer to ensure that all of the products are correct before installation. Proper assembly always requires that the installer use all instructions and safety procedures. We assume no liability for any errors made in product selection or installation.

\* Requires connector contacts be installed in a switchable +12 V pin location and ground pin location. Mapping of skid-steer connector pins required.

## BATTERY WIRING HARNESS

PN	DESCRIPTION	WT.	PRICE
21253	<b>Wiring Harness - Battery Connection</b> Connects to vehicle battery to supply power for Tilt function. Replaces cigarette lighter plug on SM40, LM40, or EM40 standard harness.	2	\$63.00

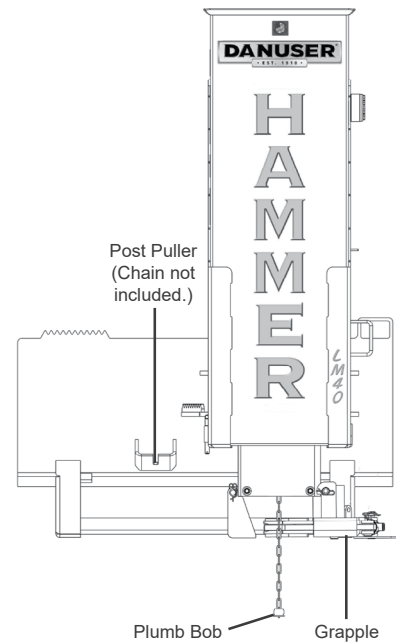


## FRONT-END LOADER MOUNT - SKID-STEER QUICK ATTACH

For tractor-mounted Hammers, recommended 75 HP & above only. DO NOT exceed the tractor loader Rated Operating Capacity. Use sufficient counterweights. See Front-End Loader Hose Kit to connect to rear tractor remotes.

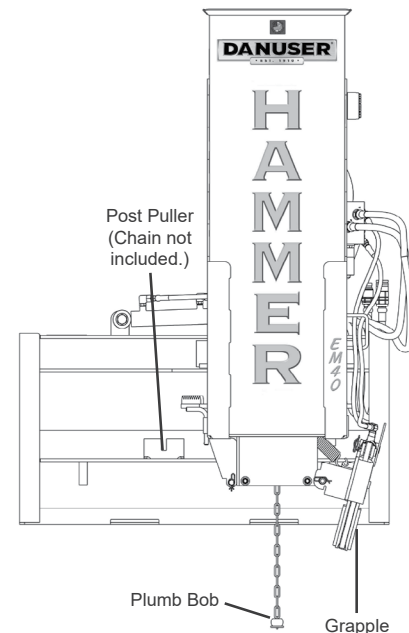
**NOTE:** If post/pipe diameter is 4" O.D. or smaller, PN 21212 or PN 21395 must be installed.

PN	DESCRIPTION	WT.	PRICE
21006	<b>Hammer LM40</b> Hydraulic continuous chain drive, 300 lb. hammer weight (500 lbs. max.), 40" stroke, up to 35 strokes per minute, drives T-post up to railroad ties. Integrated post puller to be used with log chain. <b>Includes</b> hoses with flat face couplers.	948	\$7,310.00
21006L	<b>Hammer LM40 Loaded</b> <b>Includes</b> factory-installed Additional Weight Kit	1148	\$7,800.00
21007	<b>Hammer LM40 with Grapple</b> Grapple for one-man operation.	991	\$8,000.00
21007L	<b>Hammer LM40 with Grapple Loaded</b> <b>Includes</b> Grapple and factory-installed Additional Weight Kit	1191	\$8,490.00
21008	<b>Hammer LM40 with Tilt</b> Tilt left or right up to 20°. <b>Includes</b> diverter switch and cigarette lighter adapter that connects to a power port or cigarette lighter inside the cab.	991	\$9,795.00
21008L	<b>Hammer LM40 with Tilt Loaded</b> <b>Includes</b> Tilt and factory-installed Additional Weight Kit	1191	\$10,285.00
21009	<b>Hammer LM40 with Grapple and Tilt</b>	1041	\$10,485.00
21009L	<b>Hammer LM40 with Grapple and Tilt Loaded</b> <b>Includes</b> Grapple, Tilt, and factory-installed Additional Weight Kit	1241	\$10,975.00



## FRONT-END LOADER MOUNT - EURO/GLOBAL QUICK ATTACH

PN	DESCRIPTION	WT.	PRICE
21010	<b>Hammer EM40</b> Hydraulic continuous chain drive, 300 lb. hammer weight (500 lbs. max.), 40" stroke, up to 35 strokes per minute, drives T-post up to railroad ties. Integrated post puller to be used with log chain. <b>Includes</b> hoses with flat face couplers.	948	\$7,410.00
21010L	<b>Hammer EM40 Loaded</b> <b>Includes</b> factory-installed Additional Weight Kit	1148	\$7,900.00
21011	<b>Hammer EM40 with Grapple</b> Grapple for one-man operation.	991	\$8,100.00
21011L	<b>Hammer EM40 with Grapple Loaded</b> <b>Includes</b> Grapple and factory-installed Additional Weight Kit	1191	\$8,590.00
21012	<b>Hammer EM40 with Tilt</b> Tilt left or right up to 20°. <b>Includes</b> diverter switch and cigarette lighter adapter that connects to a power port or cigarette lighter inside the cab.	991	\$9,900.00
21012L	<b>Hammer EM40 with Tilt Loaded</b> <b>Includes</b> Tilt and factory-installed Additional Weight Kit	1191	\$10,390.00
21013	<b>Hammer EM40 with Grapple and Tilt</b>	1041	\$10,590.00
21013L	<b>Hammer EM40 with Grapple and Tilt Loaded</b> <b>Includes</b> Grapple, Tilt, and factory-installed Additional Weight Kit	1241	\$11,080.00

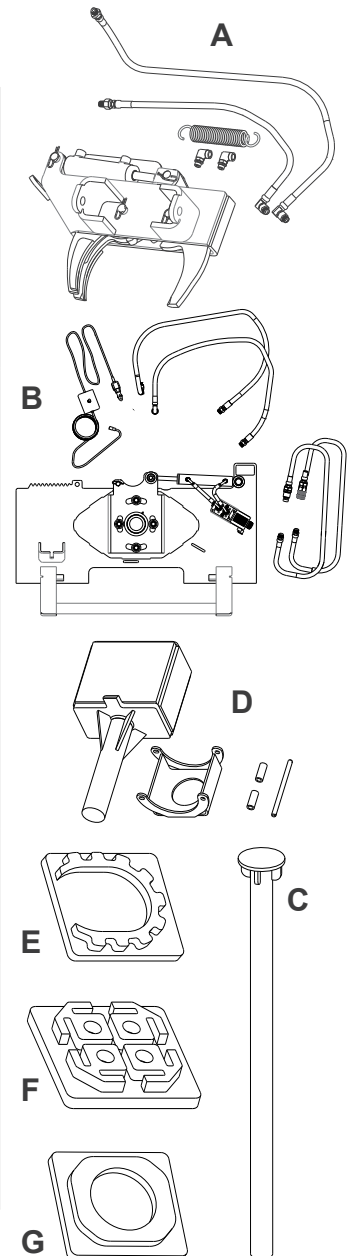


**HOSE KITS**

PN	DESCRIPTION	WT.	PRICE
21231	<b>Front-End Loader Hose Kit</b> 1/2" hose kit, 25' long, with flat face ISO couplers and pioneer couplers. <b>Includes</b> mounting bracket for bolting or welding. Hardware not included.	18	\$464.82
186065	<b>Hose Extension Kit</b> Extends Hammer hoses 24" when needed on certain skid-steers (e.g. JCB, Volvo). <b>Includes</b> two 24" hoses and fittings.	3	\$73.66

**HAMMER SERIES ACCESSORIES**

REF.	PN	DESCRIPTION	WT.	PRICE
A	21004	<b>SM40 Grapple</b> Grapple for one-person operation, for SM40 Hammers only.	65	\$868.68
--	21014	<b>EM40 / LM40 Grapple</b> Grapple for one-person operation, for EM40 & LM40 Hammers only.	65	\$868.68
B	21005	<b>SM40 Tilt</b> May be added to SM40 Hammers only. Tilt left or right up to 20°. <b>Includes</b> diverter switch and cigarette lighter adapter that connects to a power port or cigarette lighter inside the cab.	200	\$2,794.00
--	21015	<b>LM40 Tilt</b> May be added to LM40 Hammers only. Tilt left or right up to 20°. <b>Includes</b> diverter switch and cigarette lighter adapter that connects to a power port or cigarette lighter inside the cab.	200	\$2,794.00
--	21016	<b>EM40 Tilt</b> May be added to EM40 Hammers only. Tilt left or right up to 20°. <b>Includes</b> diverter switch and cigarette lighter adapter that connects to a power port or cigarette lighter inside the cab.	195	\$3,037.84
C	21149	<b>T-Post Adapter</b> Must be added for driving T-posts.	22	\$181.61
--	21163	<b>Additional Weight Kit</b> Add steel shot for additional driving force. (Up to 60% more power.)	220	\$441.96
D	21278	<b>Concrete Breaker Kit</b> May be added to all Hammer models to convert to a concrete breaker. Breaks up to 9" thick reinforced concrete. <b>Includes</b> 500 lb. breaker attachment, foot, and additional hardware for assembling.	534	\$2,589.53
E	21212	<b>Strike Plate - Horseshoe</b> Useful for driving smaller diameter pipe in difficult conditions. Aids in keeping the post centered in driver and reduces wear and tear on machine. Does not interfere with operation of the Grapple. Works with posts 5" diameter and smaller including T-post adapter.	20	\$91.44
F	21280	<b>Strike Plate - Guard Rail</b> Recommended when driving 6" or 8" I beams. Aids in keeping the guard rail from twisting and shifting. Does not work with Grapple.	20	\$105.41
G	21395	<b>Strike Plate - 5" Donut</b> In difficult driving conditions, more effective than Horseshoe Strike Plate in centering pipe. Reduces wear and tear on machine. Makes grappling of pipe more challenging. Works best with a helper to position pipe in Hammer. Preferred by fencing professionals. Works with posts 5" diameter and smaller including T-post adapter.	25	\$91.44





## SM40

PART ID: 21000

PART ID: 21001 (with Grapple)

PART ID: 21002 (with Tilt)

PART ID: 21003 (with Tilt and Grapple)

Drives fence posts, sign posts, guard rails, median dividers, tent stakes, T-post, pipe fence, and railroad ties with ease. Model SM40 has a 40" drop hammer design. With this innovative design, you can achieve a full stroke with every cycle, or utilize the short stroke feature to fine tune your depth. The Hammer DOES NOT operate with springs, hydraulic cylinder, or return line. Grapple option can be added to any model for a true one-man operation (does not include T-posts). The grapple option will allow the operator to grab the post off the ground, load it into the machine, and drive it in the ground without leaving the skid-steer seat. Tilt option allows up to 20° in each direction. The hammer weight is 300 lbs. from the factory. Additional weight can be added for a total of 500 lbs.

NOTE: If post/pipe diameter is 4" or smaller, PN 21212 Horseshoe Strike Plate (see Accessories tab below) must be purchased separately.

### Warranty

1-year

### Specifications

Post Dimensions:	T-post to RR Tie
Impact Force:	82,000 lbs.
Length of Stroke:	40
Hammer Weight:	300
Strokes per Minute:	35

	Model SM40 w/ Tilt	Model SM40 w/ Tilt and Grapple
Overall Length	45.5"	
Overall Width	25.5"	
Overall Height	64"	
Tilt (side-side)	20°	
Machine Weight	1005 lbs (1205 lbs w/ additional weight)	1045 lbs (1245 lbs w/ additional weight)
Hammer Weight	300 LBS (500 LBS MAX)	
Length of Stroke	40"	
Max. Strokes per Minute	35	
Hydraulic Requirements	1,500-3,000 PSI *12-30 GPM	
Maximum Post Width	8.5" x 9.25"	
Impact Force	82,000 lbs @ 500 lb weight	
Impact Energy	1,025 ft-lbs @300 lb weight; 1,709 ft-lbs @ 500 lb weight	

\*Hammer will still operate on machines with less than 12 GPM with fewer strokes per minute.

## LM40

PART ID: 21006

PART ID: 21007 (with Grapple)

PART ID: 21008 (with Tilt)

PART ID: 21009 (with Tilt and Grapple)

Drives fence posts, sign posts, guard rails, median dividers, tent stakes, T-post, pipe fence, and railroad ties with ease. Model LM40 has a 40" drop hammer design. With this innovative design, you can achieve a full stroke with every cycle, or utilize the short stroke feature to fine tune your depth. The Hammer DOES NOT operate with springs, hydraulic cylinder, or return line. Grapple option can be added to any model for a true one-man operation (does not include T-posts). The grapple option will allow the operator to grab the post off the ground, load it into the machine, and drive it in the ground without leaving the skid-steer seat. Tilt option allows up to 20° in each direction. The hammer weight is 300 lbs. from the factory. Additional weight can be added for a total of 500 lbs.

NOTE: If post/pipe diameter is 4" or smaller, PN 21212 Horseshoe Strike Plate (see Accessories tab below) must be purchased separately.

### Warranty

1-year

### Specifications

Post Dimensions:	T-post to RR Tie
Impact Force:	82,000 lbs.
Length of Stroke:	40
Hammer Weight:	300
Strokes per Minute:	35

	Model LM40 w/ Tilt	Model LM40 w/ Tilt and Grapple
Overall Length	45.5"	
Overall Width	25.5"	
Overall Height	64"	
Tilt (side-side)	20°	
Machine Weight	1076 lbs (1276 lbs w/ additional weight)	1116 lbs (1316 lbs w/ additional weight)
Hammer Weight	300 LBS (500 LBS MAX)	
Length of Stroke	40"	
Max. Strokes per Minute	35	
Hydraulic Requirements	1,500-3,000 PSI *12-30 GPM	
Tractor Requirements	75 HP minimum	
Maximum Post Width	8.5" x 9.25"	
Impact Force	82,000 lbs @ 500 lb weight	
Impact Energy	1,025 ft-lbs @300 lb weight; 1,709 ft-lbs @ 500 lb weight	

\*Hammer will still operate on machines with less than 12 GPM with fewer strokes per minute.



## EM40

PART ID: 21010

PART ID: 21011 (with Grapple)

PART ID: 21012 (with Tilt)

PART ID: 21013 (with Tilt and Grapple)

Drives fence posts, sign posts, guard rails, median dividers, tent stakes, T-post, pipe fence, and railroad ties with ease. Model EM40 has a 40" drop hammer design. With this innovative design, you can achieve a full stroke with every cycle, or utilize the short stroke feature to fine tune your depth. The Hammer DOES NOT operate with springs, hydraulic cylinder, or return line. Grapple option can be added to any model for a true one-man operation (does not include T-posts). The grapple option will allow the operator to grab the post off the ground, load it into the machine, and drive it in the ground without leaving the skid-steer seat. Tilt option allows up to 20° in each direction. The hammer weight is 300 lbs. from the factory. Additional weight can be added for a total of 500 lbs.

NOTE: If post/pipe diameter is 4" or smaller, PN 21212 Horseshoe Strike Plate (see Accessories tab below) must be purchased separately.

### Warranty

1-year

### Specifications

Post Dimensions:	T-post to RR Tie
Impact Force:	82,000 lbs.
Length of Stroke:	40
Hammer Weight:	300
Strokes per Minute:	35

	Model EM40 w/ Tilt	Model EM40 w/ Tilt and Grapple
Overall Length	46"	
Overall Width	27.5"	
Overall Height	64"	
Tilt (side-side)	20°	
Machine Weight	970 lbs (1170 lbs w/ additional weight)	1010 lbs (1210 lbs w/ additional weight)
Hammer Weight	300 LBS (500 LBS MAX)	
Length of Stroke	40"	
Max. Strokes per Minute	35	
Hydraulic Requirements	1,500-3,000 PSI *12-30 GPM	
Tractor Requirements	75 HP minimum	
Maximum Post Width	8.5" x 9.25"	
Impact Force	82,000 lbs @ 500 lb weight	
Impact Energy	1,025 ft-lbs @300 lb weight; 1,709 ft-lbs @ 500 lb weight	

**\*Hammer will still operate on machines with less than 12 GPM with fewer strokes per minute.**