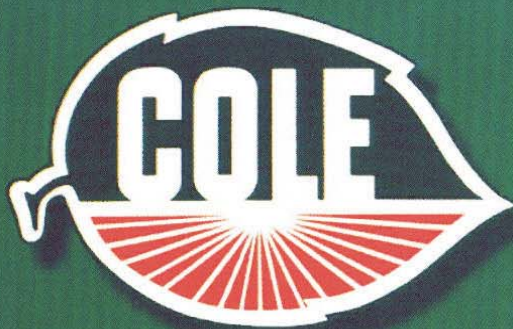
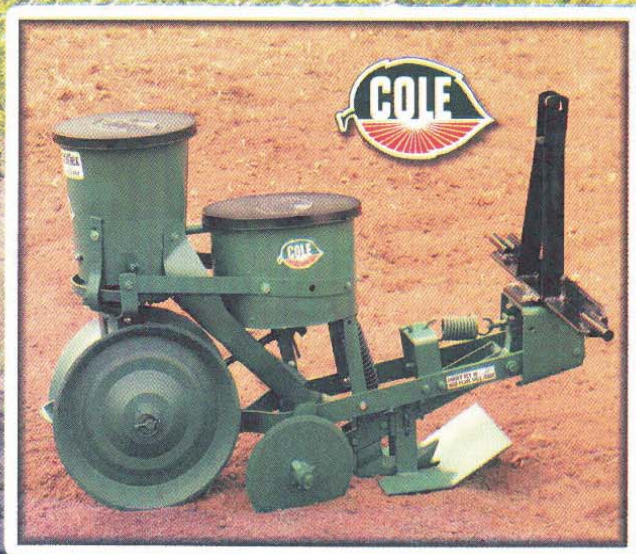


# 12 MX Multiflex



## 12 MX

Feature-Packed  
Planting Units

**No Seed  
Damage With  
Gravity-Drop  
Hopper**

**Deep Vee  
Opener  
For Good  
Germination**



**GENERAL  
IMPLEMENT**  
DISTRIBUTORS





# MultiFlex Design For Precision Planting

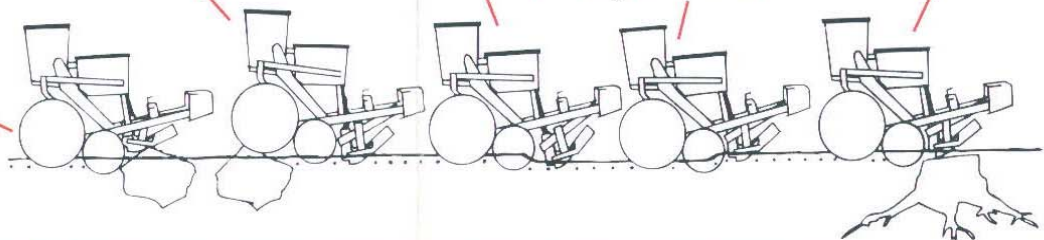
Since seed opener operates independently from press wheels, seed opener rides over rocks without damaging opener at normal speeds, and without lifting press wheel off the ground. You maintain seed planting depth except for the area of the rock, and you maintain good seed metering since the press wheel does not lose track.

The press wheel is independent of the seed opener. It rides over rocks without lifting the seed opener. You maintain uniform seed metering and uniform seed depth.

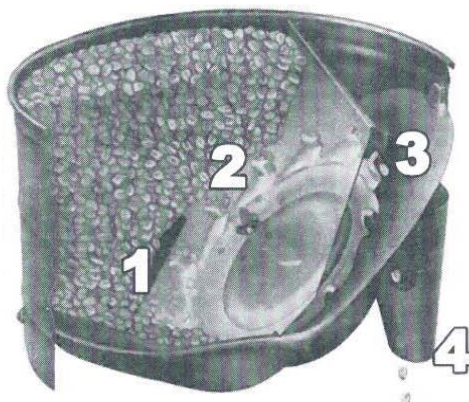
You get accurate seed planting depth even when seed opener runs down into a depression. Seed opener can float downward below level of press wheel. Positive seed depth is assured by spring-loaded seed opener.

When seed opener runs up a mound, you still get accurate seed depth and uniform seed metering. Seed opener can float upward above the lever of the press wheel. Seed opener does not plunge or push press wheel up off the ground causing is to lose friction.

Obstacles below the ground such as hard places, rocks and stumps do not interfere with planting beyond their extent. Seed opener rides over them without lifting press wheel.

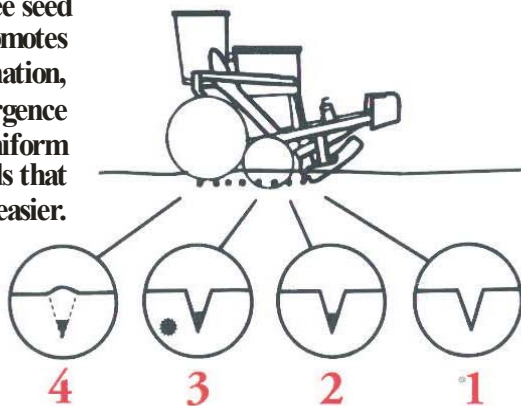


Gravity-drop, inclined plate hopper delivers accurate plant population.



1. Seeds feed under seed partition.
2. Seeds picked up as seed plate turns; Excess seeds fall back.
3. Seeds drop through opening with gentle action of gravity. No brushes, knockers or fingers to damage seeds.
4. Spout delivers accurately metered seeds one at a time to the Deep Vee sword opener for placement.

Deep Vee seed opener promotes fast germination, early emergence and uniform stands that harvest easier.



1. Deep Vee Sword cuts smooth, even seed trench and draws moisture to the seed bed. The Deep Vee at bottom of the trench is of uniform shape and depth.
2. Seeds are placed to uniform depth because seeds are trapped at the same depth in the Deep Vee.
3. Fertilizer is placed to side of seedbed where young roots will find early nourishment, but not before they are vigorous enough to stand the fertilizer.
4. Press wheel firms soil around seeds, but leaves a loose zone directly over the seed to ease emergence. Air is eliminated from the seedbed.



# 12MX

Complete Line Of Planting Units,  
Tools Bars and Attachments.



## Quality Features Mean Top Stands

Accurately place 34  
to 650 pounds of  
fertilizer per acre.

Simultaneously plant  
and place fertilizer.

Change seed plates by  
removing wing nut.

Adjust  
fertilizer rate  
with a wing  
nut.

Set seed depth with handle.

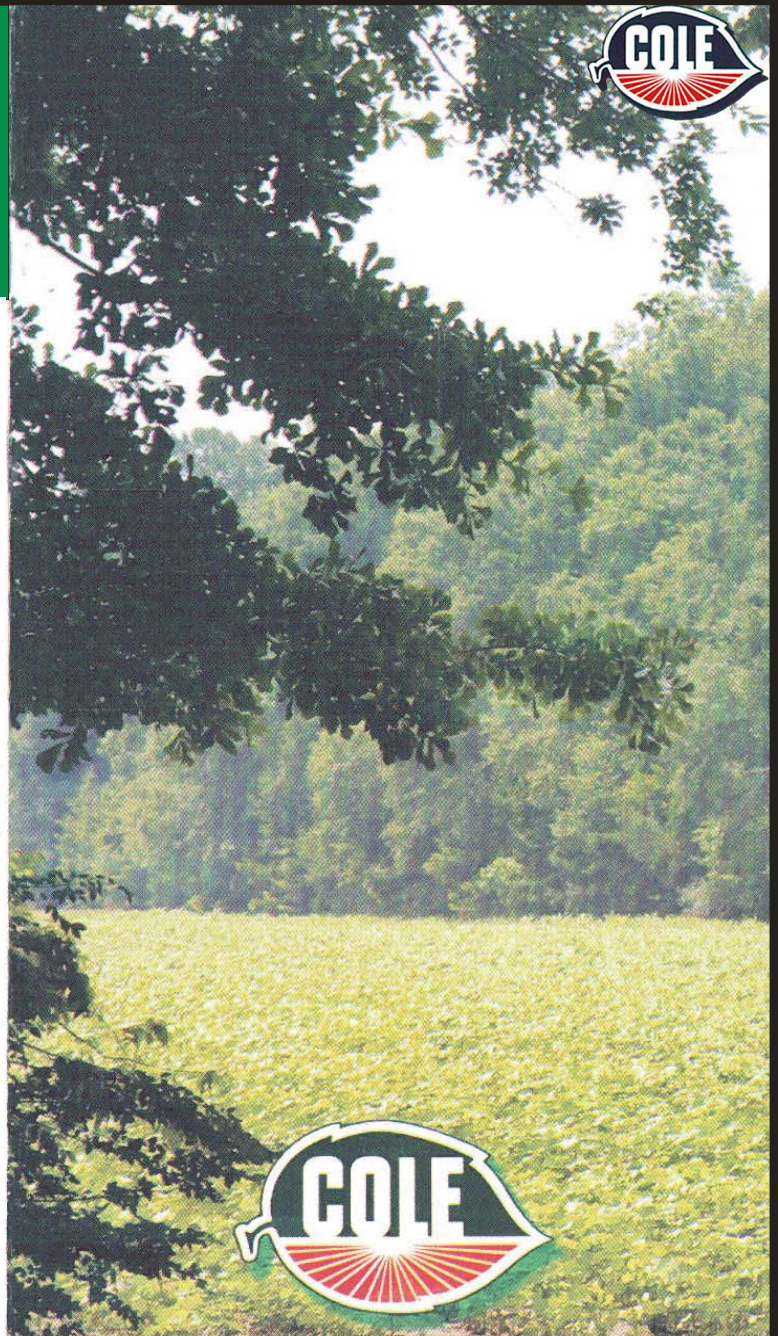
Dirt scrape  
keeps press  
wheel free  
from clods.

★ Quality  
Construction.

Split-rim concave cast iron press  
wheel firms seedbed, but leaves  
loose zone directly over seeds.

Spring-loaded seed  
opener for positive  
depth control.

- Design based on many years of experience in designing and building precision seed planters and fertilizer distributors.
- Comes with four seed plates and four distance gears for a wide selection of crops and planting distances. Accurately plants all popular garden crops.



**GENERAL  
IMPLEMENT**  
DISTRIBUTORS



## 12-MX GARDEN SYSTEM Product Code 463

### 12-MX SEED PLANTER (012-0103)

Consists of:

Seed Plates (4)

(1) POX-367

(1) P30-433

(1) P30-434

(1) P30-435

4 Spacing Gears (POG-8; POG-10; POG-12; POG-14)

4 Qt. Seed Hopper

40-Pound Fertilizer Hopper

PART NUMBER	DESCRIPTION	WEIGHT LB.	LIST PRICE
----------------	-------------	---------------	---------------

### 12-MX ONE-ROW PLANTING/FERTILIZER UNITS WITH 3-POINT HITCH

012-0101	<b>12-MX Seed Planter</b> with Category I, 3-Point Hitch. Consists of: (1) 012-0103 - 12MX Planter (1) B46-664A - Cat. I, 3-Point Hitch	181	<b>\$2108.00</b>
----------	---	-----	------------------

### 12-MX ONE-ROW PLANTING/FERTILIZER UNIT/WITH DELUXE CULTIVATOR

012-0110	<b>12-MX Seed Planter</b> with Cultivator and Planter Mounting Brackets. Consists of: (1) 012-0103 - 12MX Planter (1) B46-668 (1) COV-5S	310	<b>\$3599.00</b>
----------	--	-----	------------------

### PLANTERS ONLY

012-0103	<b>12-MX Seed Planter</b> (with Fertilizer)	161	<b>\$1910.00</b>
----------	---	-----	------------------





Prices Effective as of 3-25

## 12-MX GARDEN SYSTEM (Continued)

PART NUMBER	DESCRIPTION	WEIGHT LB .	LIST PRICE
----------------	-------------	----------------	---------------

### MOUNTING BRACKETS FOR 11-MX OR 12-MX SEED PLANTERS

B46-668	Mounting Bracket for attaching one Seed Planter to One Row Cultivator.	20	\$106.03
B46-670	Mounting Bracket for attaching one Seed Planter to 2-½" Corner Mounted Tool Bar.	6	\$98.66
B46-672A	Mounting Bracket for attaching one Seed Planter to International tractor with 1-Point Fast Hitch.	23	\$149.69

### ONE-ROW HITCHES FOR 11-MX OR 12-MX SEED PLANTERS

B46-664A	Category 1, 3-Point Hitch for Seed Planter	18	\$198.00
----------	--	----	----------

### PLANTER ATTACHMENTS

B51-075	Fertilizer Hopper Extension: Increases capacity of fertilizer Hopper to 70 pounds. Comes with lid.	4	\$187.11
B46-676	Gauge Wheel: Controls height, firms seed bed, and promotes uniform seed depth. Recommended for tractors without position control. <u>Cannot</u> be used with <b>B46-674</b> Opening Foot. Not recommended to carry weight of carrier.	16	\$207.52
B46-674	Opening Foot: Tops seed bed so seeds are planted in moist soil, levels seed bed for more uniform seed depth. <u>Cannot</u> be used with <b>B46-676</b> Gauge Wheel. Recommended that depth slide be removed when using Opening Foot.	12	\$115.67



Prices and Specifications may be subject to change without notice. Prices do not include shipping or setup.



## 12-MX GARDEN SYSTEM (Continued)

### 2 AND 4-ROW PLANTING UNITS 3-POINT HITCH

012-0130	<b>Two 12-MX Planters.</b> 2-1/2" x 80" Corner Mounted Tool Bar for Category I, 3-Point Hitch. Consists Of: (2) 012-0103 - 12MX Planter (2) B46-670 - 2-1/2" Corner Mount (1) B46-679 - 2-1/2" x 80" Toolbar	428	<b>\$4491.40</b>
012-0140	<b>Four 12-MX Planters.</b> 2-1/2" x 144" Corner Mounted Tool Bar for Category I, 3-Point Hitch. Consists of: (4) 012-0103 - 12MX Planter (4) B46-670 - 2-1/2" Corner Mount (1) B46-680 - 2-1/2" x 144" Toolbar	774	<b>\$8650.47</b>

### 2 AND 4-ROW PLANTING UNIT ATTACHMENTS

012-7050	<b>12" Diameter, Zero Pressure Gauge</b> <b>Wheels:</b> Set of 12" wheels with clamps for 2-1/2" Corner Mounted Tool Bar. Recommended for 2-row planters. Consists of: (2) B47-121 - 12" Gauge Wheel (2) B51-103 - Clamp (FLAT OR BED PLANTING)	60	<b>\$715.00</b>
----------	---	----	-----------------



Prices Effective as of 3-25



## 12-MX GARDEN SYSTEM COMPONENTS

PART		WEIGHT	LIST
NUMBER	DESCRIPTION	LB.	PRICE
B46-664A	Planter Hitch, 3 Pt., Cat. I, 12MX	20	\$198.00
B46-670	Planter Mount, 12MX 2-1/2 CMTB	6	\$98.66
B46-679	80" Corner Mount Tool Bar and A-Frame, 2-1/2" x 1/4", Cat. I	68	\$474.08
B46-680	144" Corner Mount Tool Bar and A-Frame, 2-1/2" x 1/4", Category I	110	\$615.83
B47-121	One 12" Zero Pressure Gauge Wheel, 3/4" x 2" Shank	22	\$255.72
B51-103	Clamp for mounting 3/4" x 2" Standard to 2-1/2" Corner Mounted Tool Bar	8	\$116.80
COV-5S	One Row Rigid Shank Cultivator w/5 Shanks	235	\$1583.00
COV-9S	Two Row Rigid Shank Cultivator w/9 Shanks	346	\$2448.00



Prices and Specifications may be subject to change without notice. Prices do not include shipping or setup.

Prices Effective as of 3-25



## 12-MX GARDEN SYSTEM SEED PLATES

PART NO. NUMBER	DESCRIPTION	CELLS	LIST PRICE
WEIGHT - TWO LBS. EACH			
<b>CORN (Plants One or More Seed Per Cell)</b>			
POX-604	Extra small round, Including popcorn	18	97.94
POX-605	Small round	18	97.94
POX-606	Medium round	18	97.94
*POX-367	Medium flat	12	78.62
PDX-563	Medium large flat	12	97.94
PDX-566	Large flat	12	97.94
<b>SOYBEANS/FIELD PEAS</b>			
*P30-433	Plants one or two per cell	42	78.62
<b>MILO/SORGHUM (Also okra, asparagus, coated beets and similar seed)</b>			
*P30-434	Plants two or three per cell	16	78.62

\* Shipped standard with each 12MX Planter



Prices and Specifications may be subject to change without notice. Prices do not include shipping or setup.





## 12-MX GARDEN SYSTEM

### SEED PLATES (Continued)

PART NO. NUMBER	DESCRIPTION	CELL	LIST PRICE
<b>WEIGHT - TWO LBS./EACH</b>			
<b>PEANUTS</b>			
POX-454	Small peanuts such as Spanish. Plants approximately one per cell. 18 to 75# per acre.	21	97.94
POX-467	Medium peanuts such as N.C. Runner. Plants more than one per cell. 25 to 125# per acre.	26	97.94
POX-480	Extra large peanuts such as Flora Giants	16	97.94
<b>COTTON (Acid Delinted)</b>			
POX-500	Plants three or four per hill	12	78.62
PDX-576	Drills seed	40	78.62
<b>WATERMELON, CANTALOUPE, CUCUMBER, SQUASH, PUMPKIN</b>			
PDX-355	Watermelon, squash, pumpkin (plants three or four seeds per hill)	2	78.62
POX-362	Cantaloupe, cucumber(plants two or three seeds per hill)	6	97.94
<b>SNAP BEANS, LIMA BEANS, FIELD PEAS, ETC.</b>			
P30-433	Small snap beans	42	78.62
*P30-435	Peas, Bush lima and beans - plants 3 to 7 per hill	8	78.62
<b>SUNFLOWERS</b>			
PDX-636		12	97.94

\*Shipped standard with each 12MX Planter

